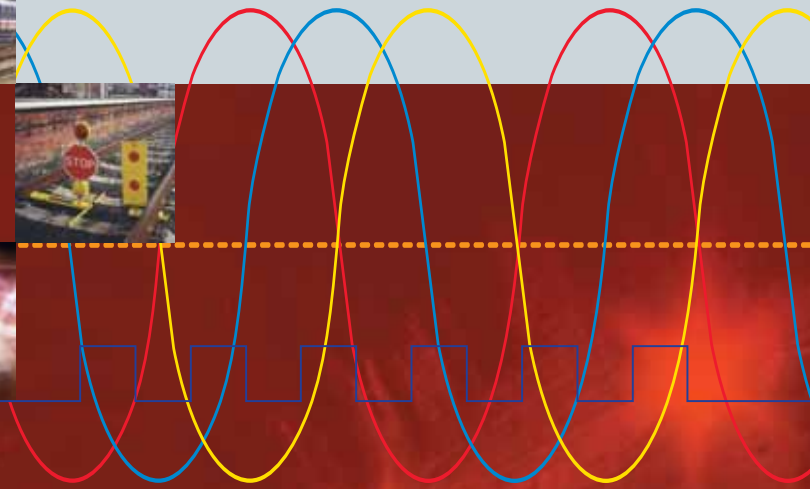


Specialist Rail Equipment Hire

www.torrent.co.uk



Torrent Trackside



our **mission**

To provide the highest quality service to railway maintenance and renewals contractors and to assist in achieving optimum rail safety by providing the latest and most efficient plant and equipment





welcome

Welcome Torrent Trackside Specialist Rail Equipment Hire brochure

Within the brochure you'll find a wide range of specialised quality equipment for hire plus a range of consumables for sale - in fact everything your company needs to complete the task in hand. We operate from an increasing number of rail hire centres, strategically located across the UK, to provide you with a fast response to your needs. All it takes is one local-rate call to our hotline number.

Since 2002 we have offered a range of specialist operated rail plant by Torrent personnel. Further details of this service can be found on page 32

We also provide a 24 hour, around the clock delivery service, 365 days of the year including on-site deliveries by request.

Late night, out-of-hours deliveries/collections can be carried out at an additional charge, by prior arrangement.

It is our policy, unless otherwise instructed by our customers, to send out a safety kit where applicable. This kit is issued on a 'sale if used basis' and may be returned if not used.



24 HOUR HOTLINE: 0845 769 7168



Key

- Item code number
- Total weight of item in kilograms
- Vibration rating (f=front handle; r=rear handle)
- LUL approved item

Code	Description	Weight	Vibration	
03-005	Cembre LD-1P Rail Drill	20.0kg	2.5M/s ²	⊖

contents

Company Policy	3
Rail Disc Cutters	4
Impact & Torque Wrenches	5
Rail Drilling Equipment	6
Stressing Equipment	10
Diesel & Petrol Generators	11
Lighting	12
Hand & Ballast Tools	15
Access	16
Lift & Shift	17
Ballast Tamping	19
Clip/Spike Applicators & Extractors	21
Warning & Safety	22
Chain Saws & Brush Cutters	25
Cold Expansion & Huck Bolt Installation	26
Welding & Brazing	27
Grinding & Cutting Equipment	28
Pumps	29
Mobile Cabins & Storage	30
Mobile Communications	31
Operator Supplied Plant	32
Traffic Management	33
Training Courses	34
Index	35
Model Conditions for the Hiring of Plant	36
Supplementary Conditions applicable to Rail Hire	37



Link-up Approved

Company Health and Safety at Work Policy

It is the policy of Torrent Trackage Limited to develop a health and safety culture throughout the organisation which is committed to the prevention of injuries and ill health of our employees, sub-contractors, and others who may be affected by our work activities and to prevent any damage or loss, to property, plant and equipment. This will be achieved and maintained by involving all levels of employees in systematically identifying workplace hazards, making adequate assessments and taking appropriate steps to control associated risks.

People are our key resource, we believe that excellent health and safety standards will contribute towards their development and lead to excellent business performance. Accordingly, we shall provide adequate financial and physical resources to support quality initiatives aimed at continuous improvement of our management systems, in which health and safety objectives are regarded by all as an integral part of our overall business strategy.

We will ensure that all employees are informed about the policy, arrangements for carrying it out and their duty to protect themselves, fellow employees and others. We will consult with them on its implementation and their own individual health and safety responsibilities. All employees will be provided with appropriate training so that they can fulfil the health and safety responsibilities allocated to them.

We will continuously monitor health and safety performance to ensure that standards are being met and management controls are working. Where necessary revisions to the policy will be implemented as a result of any deficiencies highlighted, or by new legislation or business developments.

Company Environmental Policy

Torrent Trackage Limited is committed to reducing its impact on the environment, complying with all relevant environmental legislation and industry regulations governing our operations. This means providing a safer healthier environment which is quieter, less intrusive and more efficient in its use of resources. We are also improving the care of our buildings, caring for wildlife and improving our industrial and office practices. In pursuit of these aims we are seeking to:

- Reduce noise levels.
- Reduce emissions.
- Reduce and manage waste.
- Maximise resources.
- Continually assess our environmental performance.

The management and staff of the company will support this programme and continue to raise the level of awareness of environmental issues within the organisation and promote this commitment more widely.

Richard T Donald Managing Director

Quality Policy

It is our policy to provide an impeccable service to our customers to achieve optimum rail safety by providing the latest and most efficient equipment. We will do this by devoting our energy to:

- Providing a comprehensive range of equipment.
- Ensuring the reliability of our equipment.
- Making our service standards the best in the industry.
- Meeting our customers' requirements exactly.

People are our key resource. We will provide encouragement, training and support to allow them to be proud of the work they do.

We shall provide adequate financial and physical resources to support quality initiatives aimed at continuous improvement of our management systems. We will encourage our staff to suggest improvements to the way they work and to suggest how we can improve our standards.

We will achieve our success through the use of a comprehensive management system meeting the International Quality Standard ISO 9001:2000, as well as the requirements of good health and safety (British Standard BS8800) and good environmental management practice.

Formal procedures have been prepared where consistency is important; compliance with these is a priority. Suggested improvements to these procedures are subject to controlled arrangements.

Everyone has their part to play in making the system work, understanding of the system and individual procedures, co-operation and teamwork are vital to us all.

We will regularly review the system and policy to ensure their ongoing effectiveness and efficiency in meeting the company objectives and in meeting the current needs and expectations of our customers.

Operative Training

All of our own operatives go through a vigorous training programme and carry the relevant competency certificates, track safety card and company identification.



rail disc cutters



01-002

Specification

Power Source: 2-stroke petrol
 Engine Capacity: 119cc
 Power: 5.8kW (7.8hp)
 Arbor Size: 25.4mm
 Power Unit Weight: 14.7kg
 Rail Arm Weight: 5.4kg
 Transit Case Weight: 8.9kg
 Total Weight: 30.0kg

Partner Rail Cutters

The powerhead is fitted with an electronic governor in the ignition system ensuring that the blade does not over-speed or exceed its peripheral speed even as the machine runs out of fuel.

The powerhead also incorporates full anti-vibration to all handles thus improving operator comfort and reducing the risk of vibration induced "white finger".

The fuel tank is vented to a maximum pressure of 4psi to ensure operator safety.

The screw clamp attaching the arm to the rail is radiused to prevent damage to the rail face.

All Partner rail cutters are available with a rail cutting attachment. The machines are available in either 12" (300mm) or 14" (350mm) sizes and are suitable for cutting any type of rail - flat bottomed, bullhead or conductor.

All cutters are supplied in heavy duty transport cases.



01-005

Code	Description	Weight	Vibration
01-001	12" Rail Cutter	29.0kg	f5.0/r6.0M/s ²
01-002	14" Rail Cutter	30.0kg	f5.0/r6.0M/s ²
01-005	14" Cut Off Saw	10.4kg	f6.0/r8.0M/s ²
01-007	14" Rail Cutter (c/w isolation switch)	29.0kg	f5.0/r6.0M/s ² ⊕

CONSUMABLES

Code	Description	Weight
21-001	2-Stroke Oil	1.0kg per litre
21-003	Petrol	0.9kg per litre
21-131	Cutting Oil	1.1kg per litre
21-437	12in Cutting Disc for Metal	0.5kg
21-438	12in Cutting Disc for Stone	0.5kg
21-439	14in Cutting Disc for Rail	0.85kg

impact & torque wrenches



02-001

Specification

Power Source: 2-stroke petrol
 Engine Capacity: 56cc
 Length: 590mm
 Height: 270mm
 Width: 460mm
 Torque: 350-600ft/lb
 (adjustable)
 1" standard square drive
 Total Weight: 20.0kg



02-002

Specification

Socket Rotation Speeds:
 70/195rpm; 70/255rpm
 Dimensions: 2000x620x880mm
 Weight:
 Trolley: 35kg
 Without Trolley: 108-141kg
 (dependent on type of engine)
 Torque Controller: 28kg
 Total Weight: 176kg

Maxim Master 56 Impact Wrench

A lightweight machine for tightening and loosening bolts or nuts, driving in and removing chair screws and when using an adaptor chuck, for augering. Uses standard sockets and auger bits.

Powered by a 56cc air cooled engine, the machine is equipped with full anti-vibration handles, electronic ignition, centrifugal clutch and a diaphragm carburettor.

There is also a foot rest for added stability when pull starting and an anti-scuff plate fitted to the fuel tank base.



02-001

Geismar TB2 Impact Wrench

The Geismar TB2 Rail Mounted Impact Wrench is a machine specifically designed for heavy duty coachscrew and fishbolt fastening. Quick switching from coachscrew to fishbolts position and vice versa can be achieved in as little as 15 seconds.

The TB2 also features two socket rotation speeds, an adjustable torque limiting device with graduated dial for direct reading of the tightening torque.

The TB2 is powered by a pull start petrol or diesel engine fitted with a five litre fuel tank.

Code	Description	Weight	Vibration
02-001	Impact Wrench (2-stroke)	20.0kg	13.1M/s ² ⊕
02-002	TB2 Impact Wrench (rail mounted)	176.0kg	6.0M/s ² ⊕
02-003	Impact Wrench (hydraulic)	12.0kg	33.4M/s ²
02-004	Torque Wrench (hand held 650ft/lb)	12.0kg	⊕
02-005	Impact Wrench (electric 1/2" drive)	11.0kg	
02-009	Torque Wrench (3/4" drive)	12.0kg	⊕

CONSUMABLES

Code	Description	Weight
21-448	Impact Wrench Pin	0.1kg
21-449	Impact Wrench Ring	0.1kg

Full range of sockets available on request

rail drilling equipment



03-001

Specification

Drilling: vertical or at an angle of 1 in 20
 Spindle Speed (max): 1400rpm
 Length of Auger: all standard lengths up to 305mm (12')
 Drilling Capacity (max): 33mm (1 $\frac{1}{16}$ " dia.)
 Drilling Speed: 2 seconds/hole
 Petrol Engine: air cooled 4-stroke
 Power Rating: 2.94kW (4hp) @ 2500rpm
 Petrol Consumption: 1.3L/hr (0.29gal/hr)
 Weight: *Trolley*: 35kg (77lb)
Without Trolley: 85kg (187lb)
 Dimensions:
 2150 x 620 x 1250mm
 (7' 0 $\frac{1}{2}$ " x 2' 0 $\frac{3}{4}$ " x 4' 0 $\frac{1}{4}$ ")
 Total Weight: 124kg



03-002

Specification

Length: 310mm
 Width: 280mm
 Height: 990mm
 Weight: 13kg
 Power Supply: 110v
 Total Weight: 16kg

Accessories

2 x 7.2mm Drill Bits
 1 Chuck Key

Geismar PT8 Sleeper Drilling Machine

The Geismar PT8 is essentially composed of an engine and a drilling head, supported on a four-wheel trolley. A large diameter tube connects the engine to the drilling head and serves as a frame and shield for the transmission shaft. Four arms are fitted for operation and handling of the machine. The four-wheel trolley makes it easy for one man to move it from one rail to another.

The machine has a high drilling capacity - a sleeper can be drilled in two seconds with an auger of standard size (13-18mm). The machine is also usually supplied with an auger holding chuck and a drilling guide of the desired type. The maximum drilling capacity is 33mm.

The guide holder is extremely rigid and can be adjusted to suit the length of the various augers used. Its narrow design feature allows precise drilling through any type of rail attachment.

TM4000 OBH Rail Bond Hole Drill


A unique over rail bond hole drilling machine that simultaneously drills two 7.2mm holes at 76mm centres and 57mm from the rail bottom.

The twin Hitachi 720W drills are fitted with right angled spindles to allow drilling in confined areas such as complex points and crossings, wing rails and check rails.

There are many safety and easy to use features built into the machine such as drilling is done whilst the operator is standing, the drills will only run if both the operator's hands remain on the handle and all electrics are double insulated to allow for wet weather use.

A spring assisted mechanism fully withdraws the drill bits on release of the handle.



Code	Description	Weight	Vibration
03-001	Geismar PT8	124.0kg	4.7M/s ² 
03-002	TM4000 OBH	16.0kg	

Rotamag TM32

The universal track drilling system quickly clamps on to any standard rail section and accurately drills holes for bonds, fishplates and stretcher bars. The high frequency version of this machine has been approved for use on Network Rail and London Underground networks. The rail indexing plate and vertical adjustment using a positive spring locator, ensures that every hole is correctly placed at all times, regardless of diameter and hole pitch specification.

03-004

Specification

Length: 750mm
Width: 500mm
Height: 255mm
Power: 2-stroke petrol
Total Weight: 45.5kg



03-003

Specification

Dimensions: 814 x 305 x 255mm
Power: 110v ac
High Freq. Version: 200/300Hz
Total Weight: 38kg

Rotamag PM38

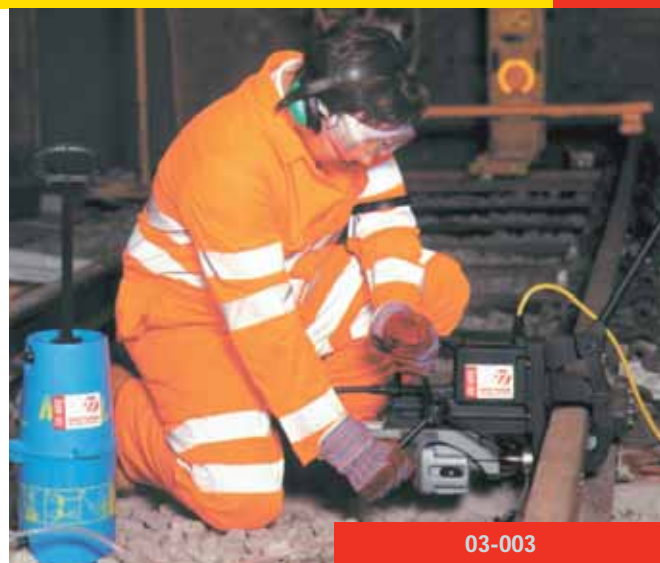
Powered by a 40cc petrol motor through an automatic clutch and gearbox, the fully independent PM38 makes on-line track drilling, a one-man operation.

Compact, lightweight and portable with positive location of accurate holes up to 38mm diameter on all types of rail section. Operation could not be simpler. The lightweight unit can be clamped over the rail within 5 seconds. A positive location is achieved through the rail indexing plate and vertical adjustment facility. This ensures accurate hole positioning up to the maximum diameter regardless of hole pitch. Specification to suit any type of fishplate.

Code	Description	Weight
03-003	Rotamag TM32	38.0kg
03-004	Rotamag PM38	45.5kg

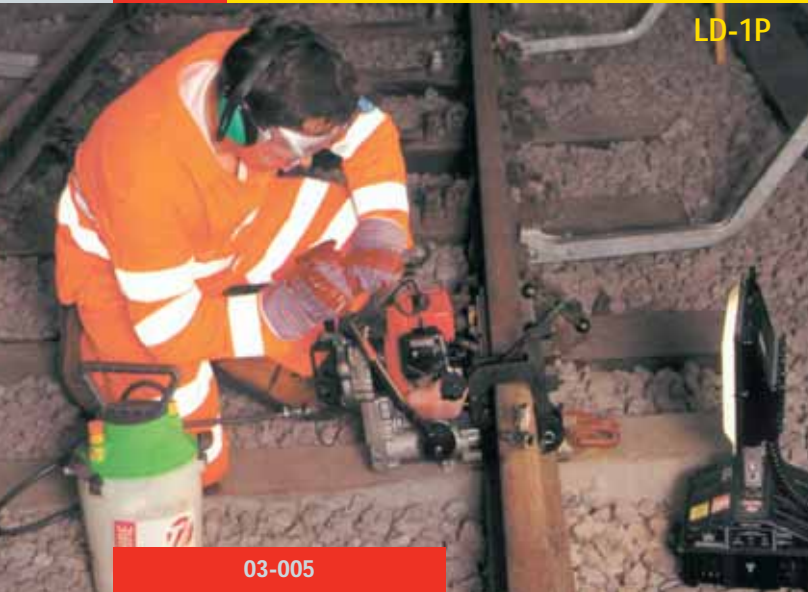
CONSUMABLES

Code	Description	Weight
21-001	2-Stroke Oil	1.0kg per litre
21-003	Petrol	0.9kg per litre



CONSUMABLES

Code	Description	Weight
21-040	Auger Bit 9mm Hex x 230mm	0.15kg
21-401	10mm (3/8in) Soft Wood Drill Bit	0.15kg
21-402	13mm (1/2in) Soft Wood Drill Bit	0.15kg
21-403	16mm (5/8in) Soft Wood Drill Bit	0.15kg
21-404	18mm (7/8in) Soft Wood Drill Bit	0.15kg
21-405	19mm (3/4in) Soft Wood Drill Bit	0.15kg
21-406	22mm (7/8in) Soft Wood Drill Bit	0.15kg
21-407	10mm (3/8in) Hard Wood Drill Bit	0.15kg
21-408	13mm (1/2in) Hard Wood Drill Bit	0.15kg
21-409	16mm (5/8in) Hard Wood Drill Bit	0.15kg
21-411	18mm (7/8in) Hard Wood Drill Bit	0.15kg
21-412	19mm (3/4in) Hard Wood Drill Bit	0.15kg
21-413	22mm (7/8in) Hard Wood Drill Bit	0.15kg
21-414	7mm (9/32in) Bond Hole Drill Bit	0.15kg
21-415	12mm (1/2in) PT8 Drill Bit	0.2kg
21-416	14mm (11/32in) PT8 Drill Bit	0.2kg
21-417	16mm (5/8in) PT8 Drill Bit	0.2kg
21-418	17.5mm (11/16in) PT8 Drill Bit	0.3kg
21-419	18mm (7/8in) PT8 Drill Bit	0.3kg
21-421	21mm (13/16in) Rail Drill Cutter (RMR 25mm)	
21-422	22mm (7/8in) Rail Drill Cutter (RMR 25mm)	
21-428	28mm (1 1/2in) Rail Drill Cutter (RMR 25mm)	
21-429	29mm (1 1/8in) Rail Drill Cutter (RMR 25mm)	
21-430	30mm (1 1/4in) Rail Drill Cutter (RMR 25mm)	
21-431	31mm (1 1/8in) Rail Drill Cutter (RMR 25mm)	
21-432	32mm (1 1/4in) Rail Drill Cutter (RMR 25mm)	
21-434	Pilot Pin	
21-435	Manganese Cutters (available on request)	



LD-1P

03-005

Specification

Engine: 33cc 2-stroke
 Drilling Range: 7 to 32mm
 Drilling Thickness: 50mm (max)
 Power: 0.88kW
 Total Weight: 20kg



LD-2E 110

03-006

Specification

Engine: 110v 50hz single phase
 Drilling Range: 7 to 32mm
 Drilling Thickness: 50mm (max)
 Power: 1.8kW
 Total Weight: 18kg

Code	Description	Weight	Vibration
03-005	Cembre LD-1P Rail Drill	20.0kg	2.5M/s ² ⊕
03-006	Cembre LD-2E Rail Drill	18.0kg	2.5M/s ² ⊕
03-007	Cembre SD-9P2 Sleeper Drill	40.0kg	3.7M/s ² ⊕

Cembre LD-1P & LD-2E 110

Both the petrol driven LD-1P and electric driven LD-2E rail drills from Cembre have been specifically designed for use in railway applications providing consistently accurate work whatever the weather conditions. Compact in size, these drills afford considerable time savings by allowing direct operation in cases which previously have entailed armament removal. Special twist drills can be used for hole diameters from 7 to 22mm on rails up to 45mm in thickness and broach cutters for 13 to 32mm hole diameters on rails up to 50mm thick. Each model is provided with a coolant system consisting of a reservoir and pump which is connected via a quick release coupler arrangement. Both units are lightweight and ideally suited for one-man operation.



03-007

Specification

Engine: 48.6cc 2-stroke
 Bit Diameter: 19mm (max)
 Drilling Thickness: 200mm max
 Power: 1.9hp/1.4kW
 Total Weight: 40kg

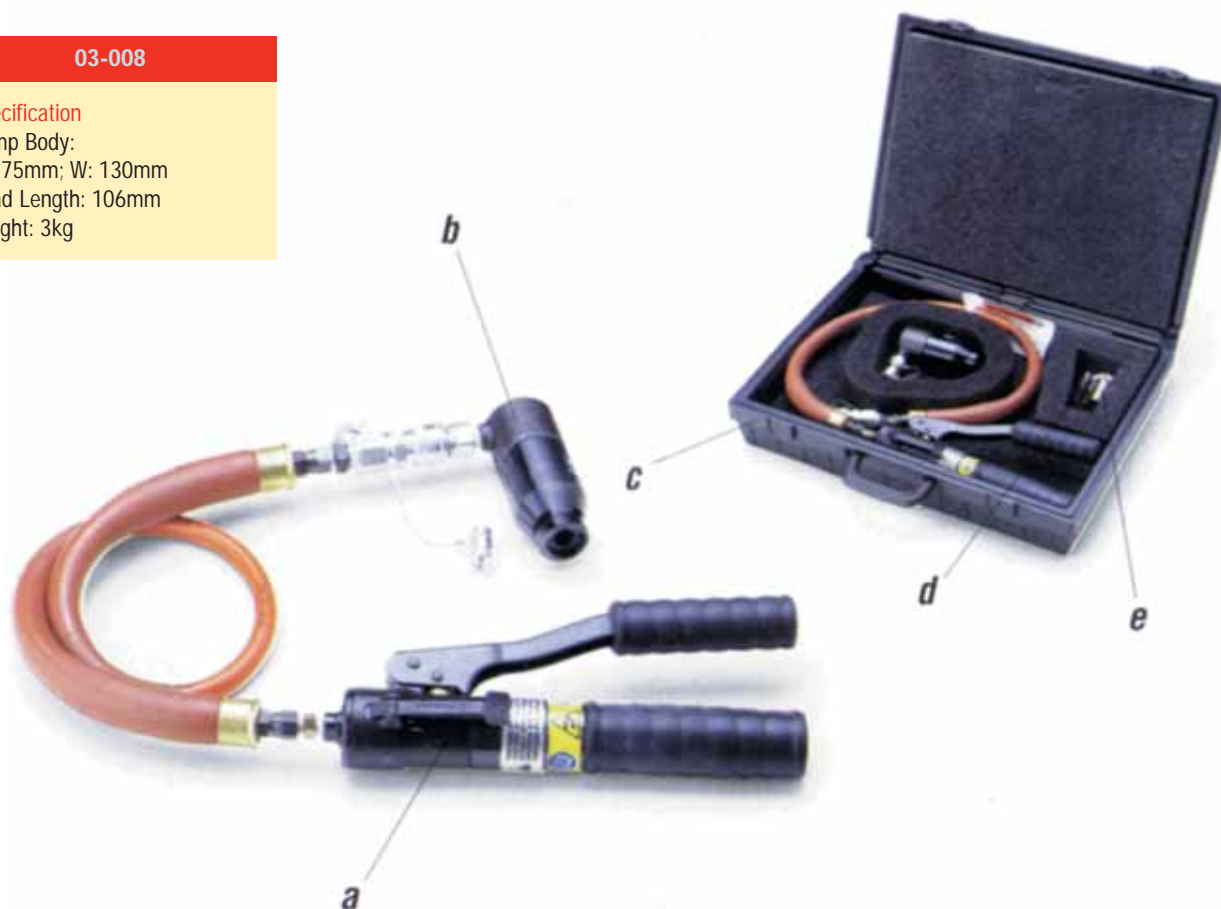
Cembre SD-5P2

The Cembre SD-5P2 is extremely compact, practical and purposely designed for the drilling of wooden sleepers in complete safety. Weighing only 18kg, it is lightweight, easy to carry around and needs no separate supporting stand. During operation, transmission of vibrations are considerably reduced by an integral shock absorber between the drive shaft and spindle.

03-008

Specification

Pump Body:
L: 275mm; W: 130mm
Head Length: 106mm
Weight: 3kg



Cembre HTEPE-DET Installation Tool for Rail Web Cable Connection System

The Cembre system allows the bush to be installed in all weather and environmental conditions with a simple, easy to operate tool, producing a consistent, quality installation, independent from the skill of the operator. The reduced installation time of this system will result in overall cost savings.

The HTEPE-DET hydraulic hand tool comprises of:

- a: Hydraulic pump tool body
- b: Hydraulic installation head
- c: Plastic carrying case
- d: Two plungers
- e: Go-No-Go gauge



During the installation process, the bush is extruded and the copper material flows into the wall of the hole, compensating for variations in hole size, filling any voids and uneven surfaces. See schematic diagrams above.

Code	Description	Weight
03-008	Cembre HTEPE-DET Rail Web Tool	3.0kg

stressing equipment



04-002

Permaquip HSM Stressor Unit

Half hydraulic stressing kits are available for hire with lightweight stressor powerpacks. They provide control for accurate stressing of CWR in all weather conditions and are available with insulated tie rods and extended rods for multiple welding.

Powerpacks

The hydraulic powerpacks are designed for ease of use and durability. Easy-to-operate controls and built-in pressure gauges afford the operator total control of the stressing operation with the minimum of effort.

The stressing units may also be powered by a small handpump if desired.

Rail Creep Adjusters

The Permaquip Rail Creep Adjuster is for adjusting gaps in jointed track without damaging the rail ends. Hydraulically operated, the unit is able to push or pull lengths of rail and is obstructionless.



04-003



04-004




04-009



04-019

04-020

Code	Description	Weight
04-002	Stressor Unit: Double Rail (c/w Power Pack)	282.0kg 
04-003	Double Power Pack	63.5kg
04-004	Single Power Pack	57.0kg
04-009	Rail Creep Adjusters (Hydraulic)	30.0kg
04-010	Rail End Straightener (Hydraulic)	231.0kg
04-017	Under Rollers (Fastclip)	1.0kg
04-019	Under Roller (E Clip)	0.6kg
04-020	Side Roller (E Clip)	1.4kg
04-029	Side Roller G44 UIC60 (Fastclip)	1.0kg
04-030	Side Roller F41 (Fastclip)	1.0kg
04-031	Side Roller G44 1131B (Fastclip)	1.0kg

diesel & petrol generators



05-004

Specification

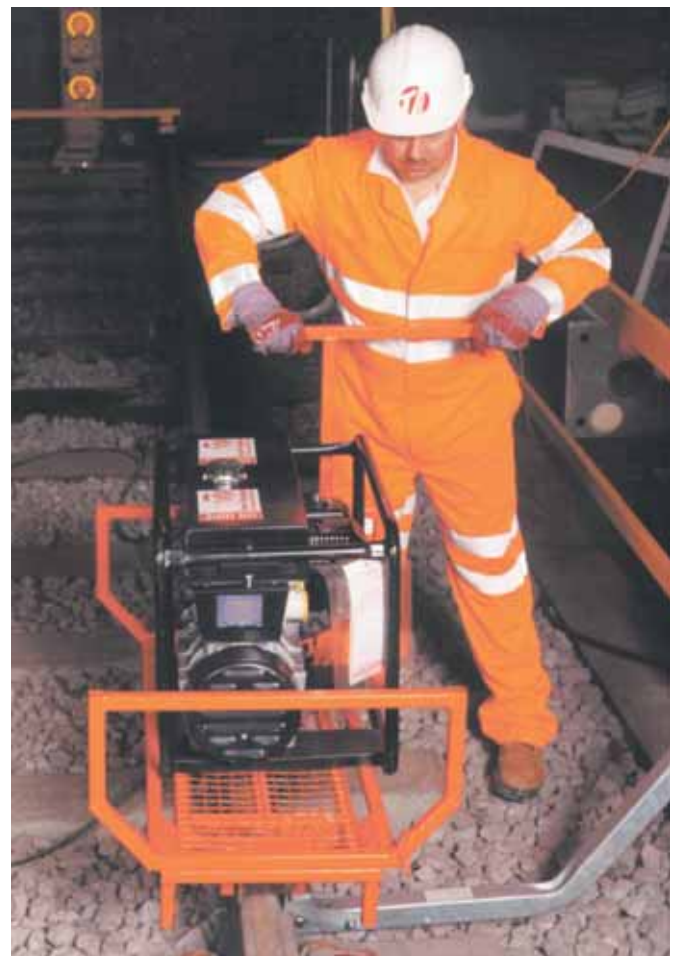
Dimensions: 610 x 410 x 475mm
 Tank Capacity: 11L
 Noise Level: 72dBa
 110v Outlets: 1 x 16A; 1 x 32A
 Weight: 40kg

Code	Description	Weight
05-001	1.5kVA 110v 'Silent' Diesel	30.0kg
05-002	2.0kVA 110v 'Silent' Diesel	41.0kg
05-003	2.0kVA 110v 'Super Silent' Diesel	60.0kg
05-004	3.0kVA 110v Petrol (c/w long run fuel tank)	58.0kg
05-005	3.0kVA 110v 'Super Silent' Diesel	65.0kg
05-006	5.0kVA 110v 'Silent' Diesel	112.0kg
05-007	6.5kVA 110v 'Super Silent' Diesel	230.0kg
05-008	10.0kVA 110v 'Silent' Diesel	372.0kg
05-009	8.0kVA Dual Voltage Diesel	198.0kg
05-010	3.0kVA 110v 'Silent' Diesel	54.0kg
05-013	7.0kVA 110v 'Super Silent'	230.0kg
05-016	5.0kVA 110v Petrol	64.0kg

Note: 240v generators available on request

CONSUMABLES

Code	Description	Weight
21-002	Red Diesel (Gas Oil)	1.1kg per litre
21-003	Petrol	0.9kg per litre



lighting



TRACKSIDE & TUNNEL LIGHTING

- Lighting can be supplied and installed by our P.T.S. Certified Staff, all of whom are trained for working on ac and dc electrified lines. Fully trained Lookouts and COSS's are also available.
- Ground spikes, lay-flat ballast baskets or platform tripods are available to suit individual needs. All sites are CAT scanned prior to inserting ground spikes.
- For your convenience and to cut down the length of possession time, lighting and equipment can be installed prior to the night of the job.
- Our staff maintain and modify the lighting as required throughout the shift to ensure safe working (this can include re-fuelling, moving or adding lights as conditions change, etc.)
- Site engineers are available for the duration of the shift.
- At the end of the shift Torrent Trackage personnel dismantle, remove from site or make safe all lighting equipment as required.



06-007

Code	Description	Weight
06-005	Handlamp Tungsten Halogen 500w	2.0kg
06-006	Inspection Lamp	2.0kg
06-007	Linklites	5.0kg ⊕
06-015	Radiodetection CAT Scanner	2.0kg
06-016	Radiodetection Generator	3.0kg
06-017	'Till Dawn' Lamp	3.0kg

CONSUMABLES

Code	Description
21-606	Festoon Light Bulb
21-620	500w Halogen Lamp
26-042	1000w Halogen Lamp
26-043	300w Halogen Lamp



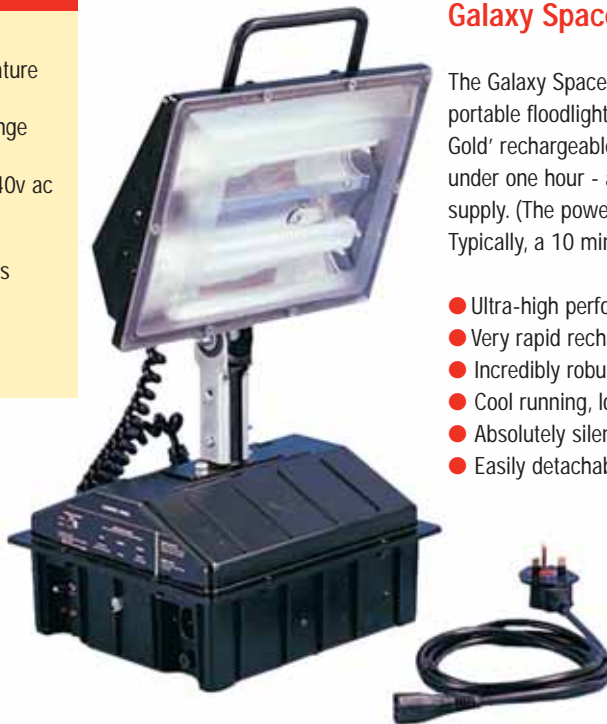
06-008

Specification

Normal operating temperature range: -40°C to +60°C
 Operating temperature range (on charge): 0°C to +40°C
 Charging source: 200 - 240v ac
 Dimensions: 264 x 245 x 550mm
 Light output: 2000 Lumens

Accessories

Optional 1.5m mast



Galaxy Spacelight

The Galaxy Spacelight is probably the world's most advanced, truly portable floodlight system. The unit incorporates a unique 'Power Block Gold' rechargeable power source. Recharging is at a very rapid rate - under one hour - and is carried out direct from a suitable 240v mains supply. (The power pack has its own integral transformer/adaptor). Typically, a 10 minute recharge provides up to two hours operation.

- Ultra-high performance with almost indefinite life
- Very rapid recharge rate
- Incredibly robust and completely weatherproof
- Cool running, low voltage equipment for complete safety
- Absolutely silent, zero pollution and energy efficient
- Easily detachable head for mounting on mast

Code	Description	Weight
06-008	Galaxy/Aurora Spacelight	9.0kg ⊖
06-060	RiteLite SLK9A Work Light	9.5kg

Ritelite SLK9A Supalite K9 Alpha

The Ritelite SLK9A is a professional personal work light which allows the user to direct light at the optimum angle from up to 8 feet. The light source is from highly efficient multiple triphosphor electronic flood lamps operating from a 12v power source.

- Can be switched between low and high power to extend duration
- Flexible work position to direct light at the optimum angle
- Can be used as high power flood beam torch
- Telescopic mast.
- Cool running, low voltage equipment for complete safety
- Non-conductive, impact resistant polymer body

06-060

Specification

Duration:
 5 hours (high output)
 14 hours (low output)
 Light source: 12v dc
 Dimensions: 203 x 241 x 152mm





06-028

Specification

Total Weight: 1300kg
 Weight (without fuel): 930kg (ALT6000: 840kg)
 Overall Length (fully retracted): 4.55M (ALT6000: 4.45M)
 Overall Length (tower vertical): 3.15M
 Trailer Frame Length: 1.78M (ALT6000: 2.67M)
 Overall Height (floodlight position): 9.14M
 Overall Height (travel position): 1.73M (ALT6000: 1.70M)
 Overall Width (normal): 1.55M
 Overall Width (operating position): 2.59M (ALT6000: 3.5M)
 Trailer Frame Width: 1.04M (ALT6000: 1.63M)
 Wheel Size: 380mm (15")
 Axle Rating: 1300kg
 Fuel Capacity: 114L (30 gal)
 Noise Level: 68dBa at 7M (ALT6000: 59dBa)
 Sound Power Level: 91LWA
 Lamps: 4 x 1000W Metal Halide

Code	Description	Weight
06-013	Tower Lights Engine Mounted (High Lux)	59.0kg
06-014	Mini Tower 5M Mast (4 x 500W lamps)	150.0kg
06-028	Amida AL4000	930.0kg
06-028	Amman ALT6000	840.0kg
06-033	SMC Towerlight	1010.0kg

Mobile Floodlight Systems

Both the Amida AL4000 and Ammann ALT6000 Mobile Floodlight Systems have been engineered to meet the specific lighting needs of the construction and rail infrastructure maintenance industries. Over 9 metres (30 feet) extended floodlight towers that are easy to move by hand. Powerful metal halide lamps produce three to four times the light output of conventional tungsten halogen - enough light to illuminate in excess of 7 acres!

- Retractable power cord automatically recoils into protective sleeve when raising, lowering or moving tower.
- Galvanised outriggers with preset position stops for safe operation in high winds.
- 360° mast rotation for all-round illumination.
- Ergonomically positioned winch handle for easy height positioning of tower.
- 114 Litre (30 Gallon) fuel tank provides 60 hours of continuous run time.
- Ammann units are fully bunded and environmentally friendly

Light fixtures are securely mounted on the mast for travel purposes (A) or can be left on the crossarm. Pallet pockets and the lifting eye (B) make the unit easier to load and unload.

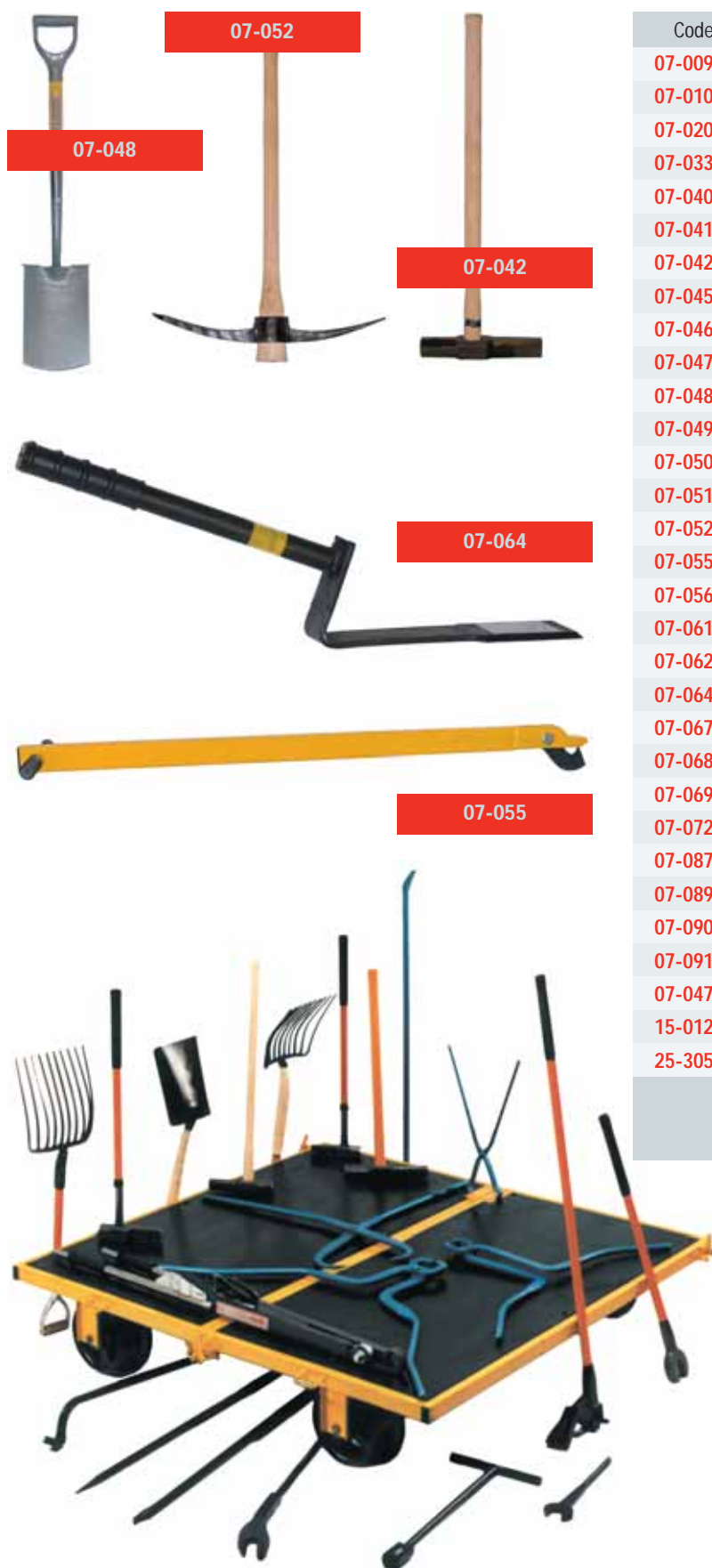
06-028



06-033



hand & ballast tools



Code	Description	Weight
07-009	4ft Rail Gauge	7.0kg
07-010	Sleeper Gauge (adjustable)	16.0kg
07-020	Rail Cant Gauge	2.0kg ⊖
07-033	Sleeper Tongs (Concrete)	6.0kg
07-040	Rail Grab	6.0kg
07-041	Keying Hammer	5.5kg
07-042	Sledge Hammer	7.0kg
07-045	Timber Nips	4.5kg
07-046	Sleeper Tongs (Wood)	6.0kg
07-047	Heel Bar	7.0kg
07-048	Ballast Shovel	2.5kg
07-049	SHC Bar	9.5kg
07-050	Ballast Fork	2.5kg
07-051	Fishplate Spanner (Large)	5.0kg
07-052	Pick Axe	4.0kg
07-055	Pan Puller (E Clip)	5.5kg
07-056	Pan Setter (E Clip)	5.5kg
07-061	T-Lifter	5.0kg
07-062	Rail Turning Bar	5.0kg
07-064	Pad Scraper	1.5kg
07-067	Pandrol Installer (Fastclip)	6.5kg
07-068	Pandrol Lifter (Fastclip)	6.5kg
07-069	Pandrol Extractor (Fastclip)	7.0kg
07-072	Fishplate Spanner (Small)	5.0kg
07-087	Keying Hammer (Insulated)	5.5kg ⊖
07-089	Ballast Fork (Insulated)	2.5kg ⊖
07-090	Ballast Shovel (Insulated)	2.5kg ⊖
07-091	Pick Axe (Insulated)	4.0kg ⊖
07-047	Heel Bar (Insulated)	7.0kg ⊖
15-012	Emergency Clamp	5.0kg
25-305	Pot Dolly (Insulated)	5.0kg ⊖

All tools can be supplied fully insulated, suitable for third-rail applications where appropriate.

access



Kwik-Step Modular Stairway System

Kwik-Step provides cost effective temporary access over rough terrain. Available in a range of profiles from 0°-50°, the system is simple and quick to install, with minimal site preparation. Modules are supplied in metre aluminium widths for emergency services or 75cm galvanised steel widths for temporary site access.

In normal conditions, the modules are secured to the ground using steel stakes driven diagonally into the slope. Stairways can be assembled in a fraction of the time taken to construct a conventional access route.

Uses include:

- Evacuation routes for rail embankments
- Accident and emergency services
- Maintenance access for rail embankments

Code	Description
08-001	Rail Mounted Alloy Scaffold Tower (c/w cantilever)
08-002	Alloy Scaffold Tower
08-020	Kwik-Step Stairway System



lift & shift



09-001

Specification
 Capacity: 15t (head); 7.5t (toe)
 Lifting Stroke: 330mm
 Weight (c/w steel handle): 31kg
 Weight (c/w alu. handle): 24kg

Duff Jack

This jack operates by means of a suspended pawl and therefore does not require a separate tripping mechanism. Capable of a 330mm lift.



09-004

Specification
 CSWL: 20320kg (head);
 15240kg (toe)
 Lifting Stroke: 152mm
 Slewing Stroke: 110mm
 Weight (c/w handle): 38.5kg

Toe Jack

Designed for use on crossings and switch points on rails over 42kg/m. The jack is obstructionless.

09-002

Specification
 SWL: 10160kg
 Lifting Stroke: 101mm
 Weight (c/w handle): 17kg



Mini Track Jack (Pan Jack)

This jack can be placed under the rail without having to remove any ballast. The jack is obstructionless, allowing traffic to pass unhindered. Its telescopic hydraulic ram gives a lifting height from 95mm to 196mm.

09-035

Specification
 SWL: 8t
 Lifting Stroke: 152mm
 Weight (c/w handle): 24.2kg



Track Aligner

This obstructionless hydraulic jack is designed for the aligning and slewing of track, points and crossings. It has a 152mm lifting stroke and a safe working load of 8t

09-003

Specification
 Lifting Capacity:
 5t (shoe); 7t (head)
 Lifting Stroke:
 160mm (shoe); 115mm (head)
 Weight (c/w handle): 20kg



Slewing Jack

Designed for slewing, aligning and lifting track, this jack is obstructionless and will slew up to 50mm.



09-005

Code	Description	Weight
09-001	Duff Jack (Aluminium/Steel)	24.0kg/31.0kg ⊕
09-002	Mini Track (Pan) Jack (obstructionless)	17.0kg ⊕
09-003	Slewing Jack (obstructionless)	20.0kg
09-004	Toe Jack	38.5kg
09-005	Lightweight Iron Man (c/w camlock)	125.0kg ⊕
09-006	Rail Scooter	54.0kg
09-007	Automatic Rail Lifter (Camlock)	10.0kg
09-035	Track Aligner Jack (Hydraulic)	24.2kg ⊕

All jacks are supplied with standard wooden handles.
 Insulated handles can be supplied on request



09-012



09-013



09-032

Code	Description	Weight
09-009	4-way Sleeper Beam [§] (c/w chains)	51.0kg
09-010	8-way Sleeper Beam [§] (c/w chains)	95.0kg
09-011	7M Rail Lifting Beam (c/w camlocks)	1520.0kg
09-012	Rail Trolley (Type B) (c/w handles)	130.0kg
09-013	Link Trolley (Type A) (c/w handles)	54.0kg
09-015	EG04 Motorised Bogie (c/w 400kg trolley)	232.0kg
09-016	3.5M Rail Lifting Beam (c/w camlocks)	760.0kg
09-017	Robel Rail Lifter	15.0kg ⊕
09-032	Rail Skates	32.0kg
09-037	Rail Trolley (Type B) Insulated	138.0kg ⊕
09-038	Gator	880.0kg ⊕
09-041	Gator Goods Trailer	230.0kg
09-061	Link Trolley (Type A) Insulated	57.0kg
09-065	Gator Personnel Carrier	400.0kg

[§] Pandrol E Clip/Fastclip Type



09-038

09-065



09-015



Specification

EG04

Frame: Welded tubular construction

Gauge: Standard (1435mm) conforms to BR W6 gauge

Dimensions:

L: 1750mm. W: 1600mm

Seating: 4 (driver + 3 passengers)

Controls: Centrally positioned between seats

Brakes: Handbrake and Footbrake

Note: Brakes incorporate modifications to meet the latest engineering standards

Engine: Honda GX120, 4hp, 4-stroke petrol

Transmission: Auto variable speed

Drive: Front wheel drive

Speed: 0-32kph

Wheels: 240mm dia aluminium

Weight: 138kg/141kg (dependent on specification)

Electrics: built-in lighting coils 12v/50W

Headlamp: 21W with switch

Rear Light: 5W red, with switch

Inspection Lighting: 21W spotlight or optional twin 500W floodlights with generator

Warning Device: Horn with push-button

ballast tamping



10-007

Factair Hand-held Stoneblower

Hand held stoneblowing (HHSB) is basically an automated form of the old fashioned but effective method of measured shovel packing, i.e. the method of restoring longitudinal track geometry.

The equipment utilises a lightweight compressor and results in a system that is both portable and more advanced than previous HHSB methods. The system is particularly suited to S & C maintenance, especially around switch toes and crossing areas.

- Treatment generally lasts at least twice as long as manual tamping
- Suitable for use in bad ballast conditions
- Obviates potential 'white finger' problems of hand-held vibrating equipment
- Can be applied from a single sleeper side or end - enabling adequate track packing to be achieved, despite sleepers being obstructed by signalling equipment, interlacing with other sleepers etc
- Does not damage ballast to the same extent as conventional compaction methods
- Lightweight and portable equipment



10-007



10-005

Code	Description	Weight	Vibration
10-001	Kango 990K 110v (c/w ballast tool)	14.0kg	10.0M/s ²
10-002	Kango PIC014 Petrol (c/w ballast tool)	14.0kg	16.4M/s ² ⊕
10-003	Wacker BH23 ^w (c/w ballast tool)	30.0kg	
10-004	Atlas Copco FB60 (c/w ballast tool)	30.5kg	
10-005	Triple Wacker Plate (c/w lifting beam)	472.0kg	13.0M/s ² ⊕
10-006	Small Wacker Plate	35.0kg	17.0M/s ²
10-007	Factair Stoneblower(c/w compressor)	137.0kg	⊕
10-045	Lifting Beam for 10-046	102.0kg	
10-046	Remote Triple Wacker Plate	2310.0kg	8.0M/s ²

^wCan be supplied with Electronic Warning System

CONSUMABLES

Code	Description	Weight
21-001	2-Stroke Oil	1.0kg per litre
21-003	Petrol	0.9kg per litre

10-017

Specification

Power Input: 1.6kW
 Hammer Speed under load:
 2200 blows/min
 Single Impact Energy: 20J
 Vibration: 8m/sec²
 Dimensions: 680x110x180mm
 Breaker Weight: 11.3kg
 Breach Chiselling
 Performance: 1300cm³/min
 Protection Class II; TV & radio
 interference suppression
 Total Weight: 12kg

**Hilti TE905 Ballast Tamping Tool**

The 110v Hilti TE905 represents a breakthrough in ballast compaction for the permanent way. Independent tests have shown that the TE905 can be operated for up to six and a half times longer than other electric breakers. The TE905 provides higher performance and more comfort for the operator.

- Revolutionary AVR damping system for reduced risk of vibration white finger
- Less physical stress for the operator increasing performance output
- New symmetrical long spade design ideal for chiselling towards the floor
- Powerful hammering mechanism with robust 1600 watt motor
- Chisel insertion or changes made easy by a hexagon connection end and automatic slide lock with ball-notch retention

Atlas Copco Cobra TT Tamper/Breaker

The Cobra TT has been specially developed for tamping. An impact of 40 joules combined with hammer speed of 1620 blows/minute means improved efficiency and drastically reduced ballast pulverisation. Weighing only 25kg the Cobra TT is easy to move around and comes equipped with a new dampening system that virtually eliminates vibration. The 90cc two-stroke petrol driven engine meets the toughest emission limit regulations.

Can be supplied with Electronic Warning Systems (see items 12-006 & 12-009)

10-030

Specification

Length: 927mm
 Depth: 331mm
 Width (across handles): 611mm
 Width (handles folded): 390mm
 Power Source: Two-stroke petrol
 Engine Capacity: 90cc
 Power Input: 1.2kW
 Cooling System: Fan cooled
 Impact Energy: 40J at 1620 blows/min
 Hammer Speed: 720 - 1620 blows/min
 Total Weight: 25kg



Code	Description	Weight	Vibration
10-008	Hilti TE54 110v	10.0kg	11.0m/s ² ⊕
10-017	Hilti TE905 110v (c/w ballast tool)	12.0kg	8.0m/s ² ⊕
10-030	Cobra TT ^w (c/w ballast tool)	25.0kg	2.3M/s ² ⊕

^wCan be supplied with Electronic Warning System

clip applicators & extractors

Geismar AP21 Rail Mounted Clip Applicator & Extractor (E Clip)

The Geismar AP21 is a hydraulic machine designed for the insertion and extraction of Pandrol clips, either "PR" or "e" series, Stedef clips "DSA" type and other similar clips.

The machine performs simultaneous extraction or insertion of two clips on both sides of the rail by pulling or pushing the clip buckles.

The main advantages of the system are:

- High Output
- Tools can be exchanged within a few minutes
- Work on wooden or concrete sleeper configuration
- All operating controls located on same side of frame, in easy reach of the operator
- Pressure is continuously applied, whatever the operation and without any operator's action
- Electrical switched return mechanism, increasing output whilst reducing operator fatigue

Geismar AP11 Rail Mounted Clip Applicator & Extractor (Fastclip)

The Geismar AP11 is a petrol-driven machine designed for the insertion and extraction of Pandrol Fastclips.

The machine is fitted with a T6 head and performs simultaneous extraction or insertion of two fastclips on both sides of the rail.

The main advantages of the system are:

- High Output
- Tools can be exchanged within a few minutes
- Work on wooden or concrete sleeper configuration
- All operating controls located on same side of frame, in easy reach of the operator
- Pressure is continuously applied, whatever the operation and without any operator's action
- Electrical switched return mechanism, increasing output whilst reducing operator fatigue

Code	Description	Weight	Vibration
11-001	Hydraulic Spike Remover* (Hand held)	14.0kg	
11-004	AC-1 Rail Mounted Spike Remover	123.0kg	
11-005	Hydraulic Pandrol Clip Remover	71.0kg	15.0M/s ²
11-006	Electric Pandrol Clip Remover	71.0kg	15.0M/s ²
11-007	AP21 Applicator/Extractor (E Clip)	203.0kg	4.5M/s ² ⊕
11-009	AP11 Applicator/Extractor (Fastclip)	167.0kg	4.5M/s ²
11-014	Cembre Clipper Power Unit	63.0kg	2.5M/s ²
20-051	E Clip Base	48.0kg	
20-052	Fastclip Base	66.0kg	

*Requires Hydraulic Power Pack 04-004 to operate

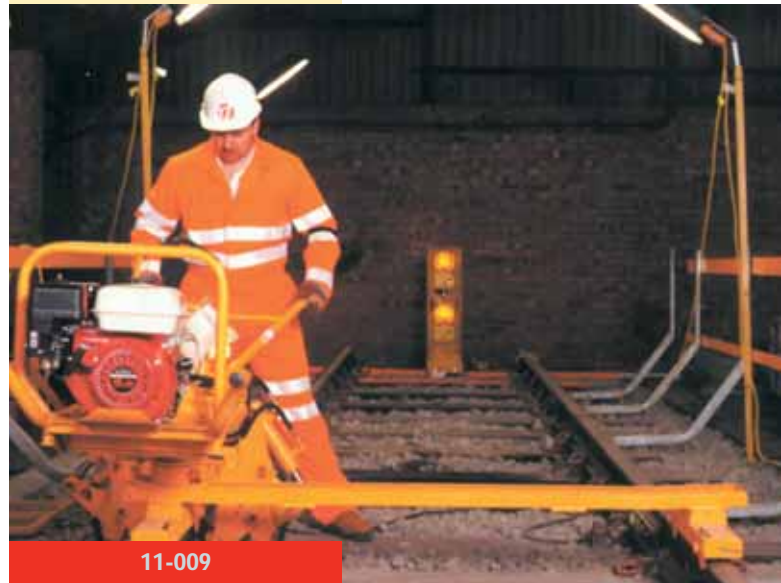


11-007

Specification

Output: 1700 clips/hr
 Thrust (max): 31kN
 Machine: 2250x600x1100mm
 Weight (without trolley): 140kg
 Trolley: 1700x600x330mm
 Weight (trolley): 35kg
 Total Weight: 203kg

11-014



11-009

Specification

Engine: Honda-type GX160
 Output (max): 1210 clips/hr
 Thrust (max): 29kN
 Machine: 2100 x 835 x 935mm
 Weight (without trolley): 148kg
 Weight (trolley): 34.5kg

CONSUMABLES

Code	Description	Weight
21-001	2-Stroke Oil	1.0kg per litre
21-003	Petrol	0.9kg per litre

warning & safety equipment



12-002 · 12-003 · 12-004



12-012



12-001

General Warning & Safety Equipment

Our range of warning and safety equipment gives you the ability to block a section of track or put in place a temporary speed restriction, quickly and efficiently.

Each piece is designed so that it can be placed on-site in its transportation mode and erected within minutes when the restriction is required.

Code	Description	Weight
12-001	Audible Warning Device (AWD)	13.0kg
12-002	Marker Board	9.5kg
12-003	EROS Warning Board	50.0kg
12-004	Speed Board	2.0kg
12-005	Temporary Track Magnet	40.0kg
12-006	Gifas Warning System *	10.0kg
12-009	Factair Electronic Warning System	
12-012	Possession Limit Board (c/w base)	15.5kg

* For use with Wacker BH 23 and Atlas Copco Cobra TT Ballast Tamperers



Rigid Safety Barrier Systems

Torrent Trackside's Rigid Safety Barrier Systems offer immediate, physical protection for trackside workers without any specialist skills. By means of a simple clamping arrangement to the foot of the running rail, the system can be quickly and easily erected without requiring ballast penetration or any disturbance to sub-ballast services.

Benefits:

- Immediate protection for workforce
- Creates an enclosed 'Green' zone
- Fits to both flat bottomed and bullhead rail
- Insulated for use in 3rd-Rail areas
- Adjustable distance settings from rail to barrier
- Strong and lightweight GRP spars
- Supports overhead lighting masts
- Does not disturb sub-ballast services
- Eliminates the need for CAT scanning
- Quick assembly and dismantling - no tools required
- Fully approved to railway standards
- Allows trains to pass at 100mph
- Access gates can be installed



Code	Description
12-065	Rigid Safety Barrier System





Automatic Track Warning System (ATWS)

A state-of-the-art radio communication system which can monitor 12 single direction lines or 6 bi-directional lines, or any combination of the two.

Rail mounted track sensors positioned at the nominal sighting distance for line speed, detect the movement of traffic. The sensors are key locked to the rail to prevent unintentional removal and a sabotage sensor sets off an alarm within the system if moved. The system is also designed to 'Fail-to-safe' in the event of loss of signal, low batteries or sensors becoming detached from the rail. Set-up time is minimal.

A 'Remote Unit' is located trackside within 50 metres of the Track Sensor and picks up the signal relayed by the Sensor. In turn, it sends the signal to the worksite-located 'Master Unit'. Detecting a signal from the 'Remote Unit', the 'Master Unit' then sends a signal to the Individual Warning Device (IWD) worn by each operative and to any Individual Warning Alarms (IWA) in use on the designated site. The IWD has a vibrating neck piece and also emits an audible warning.

Code	Description	Weight
12-900	Master Unit & Individual Warning Transmitter	-
12-901	Individual Warning Alarm (IWA) (Mini)	-
12-902	Group Warning Alarm (GWA) (Maxi)	-
12-903	Remote (Distant) Unit	-
12-904	Individual Warning Device (IWD) - Harness	-
12-905	Individual Warning Ear defender (IWE)	-
12-906	Extra Battery Pack (General)	-
12-907	Rail Sensor (cableless)	-
12-908	Extra Battery Pack (IWD)	-
12-909	Battery Pack connecting cable 0.3m	-
12-910	Battery Pack connecting cable 2.3m	-



chain saws & brush cutters



13-001

Specification

Weight (approx): 6.0kg
 Power: 3.4kW (4.6hp)
 Noise level (max): 109dBA
 Chain pitch: 0.325in
 Bar length: 15in

15 inch 2-Stroke Chain Saw

A powerful saw with very efficient power/weight ratio. The unit has an ergonomically designed handle, slim body with a high centre of gravity, filtered air injection and low vibration characteristics.



7inch Brush Cutter

A powerful grass and brush cutter designed to deal comfortably with the toughest of challenges. A powerful engine with relatively low weight, the machine has an extra long and angled shaft to allow for a wider sweep. A 'LowVib' vibration damping system isolates the engine, transmission and cutting attachment to effectively reduce vibration levels in both handles, and any other parts that may come in contact with the operator. A rugged harness and offset handlebar with specially designed angled handles provide even more comfortable ergonomics. Tilt and rotate handlebars simplify transport and storage.

13-005

Specification

Weight: 8.6kg
 Power: 1.8kW (2.4hp)
 Noise Level (Max): 114dBA

Code	Description	Weight	Vibration
13-001	15 inch 2-Stroke Chainsaw	8.0kg	6.0M/s ²
13-003	Extra Chain (for 13-001)	0.3kg	N/A
13-005	7inch Brush Cutter	10.0kg	2.5M/s ²
13-007	Safety Kit (for 13-005)	1.0kg	N/A
13-009	Hedge Trimmer (Petrol)	5.0kg	13.0M/s ²
13-010	Safety Kit (for 13-001)	1.0kg	N/A

CONSUMABLES

Code	Description	Weight
21-135	Protective Gloves	0.1kg
21-136	Glove Liners	0.1kg
21-137	Face Visor	0.2kg
21-436	15in Chain Saw Chain	0.3kg
21-442	Brushcutter Blade	1.0kg
21-443	Brushcutter Cord (15M)	1.0kg

cold expansion & huck bolt



18-001

Code	Description	Weight
03-005	Plug Cutter Drill	20.0kg
18-001	Cold Expansion Puller Gun (FTI)	10.0kg
18-004	Cold Expansion Hydraulic Power Pack (FTI)	30.0kg
18-007	Cold Expansion Electric Power Pack (FTI)	30.0kg
Code	Description	Weight
14-001	Huck Bolt 1in Gun	23.0kg
14-002	Huck Bolt 1½in Gun	23.0kg
14-003	Huck Bolt Powerpack ¹ (c/w hose set)	48.0kg
14-004	Huck Bolt Cutter	25.0kg

¹ Electric Powerpacks require a minimum of 5kVA.
Hydraulic installation tools are supplied with one hose assembly.

COLD EXPANSION CONSUMABLES

Code	Description	Weight
22-014	Plug Cutter 28-30	0.25kg
22-015	Plug Cutter 29-31	0.25kg
22-016	Plug Cutter 30-32	0.25kg
22-017	Plug Cutter 31-33	0.25kg
18-026	31.0mm Sleeve	0.5kg per 10
18-027	32.0mm Sleeve	0.5kg per 10
18-028	33.0mm Sleeve	0.5kg per 10
18-026	30.0mm Sleeve	0.5kg per 10

About Cold Expansion

Railway track is continually subjected to high cyclic tensile loads generated by the passage of rolling stock over joints. Flexing and displacement of rails at bolted joints, combine to induce high tensile loads at the bolt hole which often generates fatigue cracks. If left undetected, these fatigue induced cracks can lead to fractures which in extreme cases could cause train derailment. The cracking of rail-end bolt holes has been a major concern for years and a major cause of premature rail replacement, imposition of speed restrictions and is a significant factor in rail inspection and maintenance costs. Increased rolling stock loads and heavier rail traffic has made it even more essential to eliminate fatigue cracks and prevent potential costly derailments. Fatigue Technology's (FTI) RailTec System substantially increases the life of bolted rail by shielding bolt holes from the stresses that cause cracks and failure. FTI's system has successfully extended the life of bolt holes in metal structures for over 25 years.

- Improves the fatigue life of a hole by at least 300%
- Arrests the growth of small cracks
- Cost-effective alternative to replacement track
- Reduces maintenance and inspection costs
- Increases the overall structural integrity and safety of the line

We are able to offer a specially adapted rail drill which has vertical and horizontal axes adjustments and comes complete with a range of tools for opening out bolt holes. The drill can be used for the following applications:

- Drilling 30mm holes in new track
- Expanding undersize holes to 30mm
- Expanding bolt holes in existing track prior to cold expansion with three size options: 31mm; 32mm; 33mm.

The drill and tooling (shown opposite) eliminates the use of a Benkler rail drill, tapered bridge reamers and trolley mounted swivel jib.

We also offer Training on how to use Cold Expansion Equipment.



14-001

Torrent Trackside is the authorised agency for sales in the UK & Eire for all FTI Railtec System cold expansion products

welding & brazing



Pin Brazing Unit BB3

The portable BB3 is suitable for all types of installation and maintenance programmes.

The pin brazing process of the unit is electronically controlled to provide total consistency and is pre-programmed to three settings. The relevant setting is shown on each pack of brazing pins. When the correct setting is selected on the control panel, the process is automatically timed to provide an optimum brazed connection. If required, it is also possible to use brazing pins with a fuse wire.

The completely sealed batteries are of a high power design and can easily be recharged from a mains supply. The battery capacity is sufficient for approximately 150 brazes using the smallest type of brazing pin.

- Portable and easy to transport
- Electronically controlled for consistency and ease of use
- Up to 150 brazes without recharging batteries

35-001

Specification

Dimensions: 430x430x600mm

Batteries: 12v 26AH

Output current (max): 260A

Weight: 47kg



15-007

Code	Description	Weight
15-001	Genset MPM 5/225 IEBH Welder/Generator	121.0kg ⊕
15-002	Genset MPM 5/180 ILPAE Welder/Generator	162.0kg
15-003	Genset MPM 7/250 IDRAE Welder/Generator	221.0kg
15-004	Genset MPM 10/300 IEL Welder/Generator	250.0kg
15-005	WASA ZED2 Wire Fed Unit	17.0kg
15-006	Welding Oven	7.5kg
15-007	Thermit Rail Welding Kit (complete)	149.0kg ⊕
15-008	Oxy-propane Cutting/Pre-Heat Equipment	7.0kg
15-009	Oxy-acetylene Cutting/Pre-Heat Equipment	7.0kg
15-010	Hilti TE104 110v Needle Gun (Vibration: 9.0M/s ²)	12.0kg ⊕
35-001	BB3 Pin Brazing Unit	47.0kg

¹ Electric Powerpacks require a minimum of 5kVA.
Hydraulic installation tools are supplied with one hose assembly.

grinding & cutting



Geismar MLC Frog & Switch Grinder

The Geismar MLC is a rail mounted machine with two interchangeable heads designed to grind the frog and railhead profiles. The operator is able to control the machine in a standing position without any physical effort and has perfect visibility of the working area.

Lightness and ease of handling characterise the MLC. One head is designed for a flat grinding wheel, the other for a straight cup type grindstone.

The integral trolley which supports the head, is fitted with a lever and vertical adjustment handwheel, to position the grindstone over the rail. A lockable handle allows the operator to adjust the grinding angle up to 45° on either side of the vertical. The precise angle is indicated on a graduated dial.

Grinding heads can be mounted easily without any tools within six minutes.

16-026

Specification

Weight: 96kg (212lb)

Dimensions: 1850 x 1060 x 990mm

Power Source: Honda GX270 petrol engine

Output: 9hp (6.6kW) at 3600rpm

Code	Description	Weight	Vibration
16-001	Rail Profile Grinder (Petrol)	72.0kg	13.8M/s ² ⊕
16-002	Rail Profile Grinder (Electric)	72.0kg	5.5M/s ² ⊕
16-003	Rail Profile Grinder (Hydraulic)	80.0kg	
16-004	Weld Trimmers	67.0kg	⊕
16-005	Matweld Double Weld Shears (Man)	67.0kg	
16-007	Geismar MS9 Grinder	100.0kg	6.0M/s ²
16-008	Robel Switchblade/Frog Grinder	100.0kg	1.3M/s ²
16-009	Geismar MC2 Grinder	102.0kg	
16-011	Hand-held 5in Mini Grinder (110v)	3.0kg	2.5M/s ²
16-012	Hand-held 7in Angle Grinder (110v)	6.0kg	2.5M/s ²
16-013	Hand-held 9in Angle Grinder (110v)	6.0kg	2.5M/s ²
16-014	Hand-held 12in Angle Grinder (110v)	12.0kg	2.5M/s ²
16-015	12" 2-Stroke Disc Cutter (Petrol)	10.5kg	f3.8/r8.9M/s ²
16-016	14" Cut Off Metal Saw	18.0kg	
16-022	Hand-held 4½in Mini Grinder (110v)		2.5M/s ²
16-023	Hand-held 4in Angle Grinder (110v)		2.5M/s ²
16-024	Hand-held 5in Angle Grinder (110v)		2.5M/s ²
16-026	Geismar MLC Grinder (Petrol)		1.3M/s ² ⊕
16-029	'A-Frame' Grinder Frame		
16-031	Geismar ESN3 Double Weld Shears	70.0kg	⊕



16-005

CONSUMABLES

Code	Description	Weight
21-444	Grinding Stone Stumec MP12 (Profile Grinder)	2.0kg

pumps



17-002

17-001



JS400 2in Water Pump

A heavy duty side outlet industrial water pump suitable for demanding site tasks delivering over 250 litres per minute.

Code	Description	Weight
17-001	JS400 2in Submersible Pump (110v)	13.5kg
17-002	Honda 2in Pump (Petrol)	20.0kg
Pumps include delivery hose		

mobile cabins & storage



Groundhog Mobile Units

A range of mobile units from Groundhog, from a simple Tool Vault to the Mess Unit/Tool Vault/Toilet Combo.

Features include:

- All steel and fully welded construction
- Vandal resistant storage facility
- Facilities for Chubb Hercules locks
- Fully towable (depending on unit weight)
- In-built hydraulic jacking system
- Wheels retract fully under the unit
- Towing equipment secure from vandalism under lockable cover
- Raised or lowered in minutes ready for your occupation

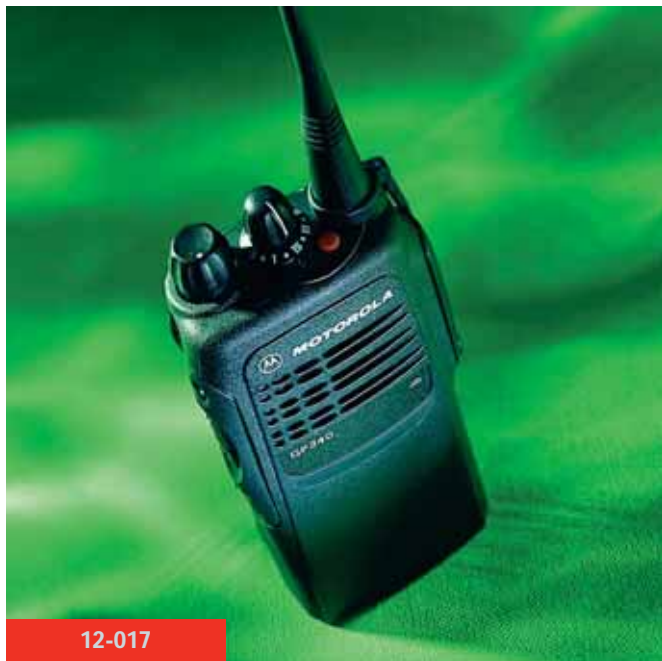
Can be supplied with built-in super silenced power unit for lighting, heating and canteen equipment etc.

Code	Description
19-001	Groundhog Tool Vault/Mess Unit/Toilet *
19-002	Groundhog Tool Vault/Mess Unit
19-003	Groundhog Tool Vault
19-028	Fire Store (4 x 4 x 2ft)
19-029	Site Tool Store (4 x 4 x 2ft)

* This unit is not suitable for road towing.
Toilet servicing is available at extra cost.



mobile communications



12-017

Mobile Communications Equipment

Ease-of-use, absolute reliability and effective performance are the criteria that determine our range of mobile communications equipment. What we don't offer, are products which have technological gimmicks, that take weeks to master, or equipment you wouldn't feel immediately comfortable with. When we deliver, it's everything you need - just how it should be.

Back to Back Radio

A rugged high performance hand portable radio, streamlined to fit snugly into the palm of your hand. Programmable to 8 or 16 channels.

Nokia Premicell

The Nokia Premicell allows conventional landline telephones to be used where there is no landline connection but where there is adequate cellular phone coverage. Calls are transmitted via the GSM cellular network. Connect the normal telephone to the unit, lift the handset and make a call as with any other telephone. The Premicell is quick and easy to install and can be used for fax and data transmissions.



31-001

D700 Dolphin ExpressNet

Dolphin combines the four essential communications technologies in one network - ExpressNet. A digital radio, cellular phone, pager and packet data interface all in one neat little handset.



15-041

Code	Description	Weight
12-017	Back to Back Radio Handset	0.3kg
15-041	D700 Dolphin ExpressNet Handset	0.3kg
31-001	Nokia Premicell	2.0kg



operator supplied plant hire



Cembre Fastclipper



Torrent Trackage provides the following list of specialist rail plant complete with Operators:

Single, Double & Triple Wacker Plates (Manual & Remote Controlled)

Used for ballast compaction/consolidation

Harsco Gator (RRV): available with personnel carrying trailers and equipment trailers.

Used for the safe transportation of staff, materials and equipment within a possession

Geismar EG04 (RMMM) Personnel Carrier: available with trailers

Used for the safe transportation of staff, materials and equipment within a possession

Geismar AP11 & AP21 Pandrol Fastclip Extractor/Installer

Cembre PCM2P/FC Pandrol Fastclip/E-clip Extractor/Installer.

Cold Expansion Equipment (CBX)

Additional equipment is continually being added to the Operator Supplied range. Please contact your local rail hire centre for latest information

Since Network Rail made the decision to take maintenance of the infrastructure back in-house in 2002, Torrent Trackage has seen a steady rise in the demand for operated specialist rail plant.

The pressure placed upon Network Rail, London Underground, its contractors and its suppliers to work safely and cut costs is fully appreciated by Torrent Trackage. Our aim is to ensure customer objectives are achieved wherever the supply of our services is required. Over recent years, Torrent has worked closely with its customers to determine the behaviours associated with the supply of plant and equipment. Ultimately, this has led to an increased demand from these customers to supply 'mission critical' plant complete with our experienced operators.

Our personnel maintain and operate the equipment throughout the year. Nobody understands it better than them. Torrent's Operator Plant Hire Service provides significant benefits over traditional plant hire practices and our customers have seen significant improvement in productivity and cost savings.

Benefits ...At a glance

- Safe and efficient operation.
- Reduced resource scheduling.
- Reduction in suppliers.
- Reduced training overhead.
- Reduction in specialist PPE costs.
- Eliminate operator negligence.
- Eliminate additional damage/loss costs.
- Breakdown response significantly improved. (fitter/operator on-site).
- Machine output maximised (experience operators).
- Possession overrun risk minimised.
- Plant project costs contained at budgeted levels.
- Increase competitive advantage / KPI's.

traffic management



Torrent Trusside has had many years experience in Traffic Management and has gained an excellent reputation within the industry for providing not only a quality, but totally dependable service.

Full road closures and diversions for bridge inspections (including the supply of Mobile Elevating Work Platforms), level crossing repairs, half road closures with mobile temporary traffic signals or stop/go boards, lane closures; just some of the many situations we are involved in every week. Whatever the location - anywhere a managed traffic control system is required, we can service your needs.

The company is also well versed in the documentation and negotiations required to satisfy Local Authorities, Highways Agencies, Transport Organisations and the Emergency Services to ensure on your behalf, that Traffic Management is carried out safely, legally and only in authorised situations. This added value part of our service minimises any direct risk to our customers.

All our operational staff are fully trained to the required levels, from farm tracks to high-speed roads. Our standards of service and all our equipment is compliant with the Roads & Streetworks Act 1991 and Chapter 8 Regulations. The company is also ISO 9001:2000 registered for Traffic Management.

We understand the needs and demands of the modern Railway Industry and are very much geared to meeting those requirements - 24 hours a day, 365 days a year.



training courses



Torrent Trackside offer training courses on a wide range of rail-specific tools and equipment including:

Manual Handling	Angle Grinder
Abrasive Wheels	MC3 Grinder
Rail Saw ☺	MLC Grinder
Impact Wrench ☺	Switchblade Grinder
Generator	AP11 Fast Clip Machine
Disc Cutter	Rail Bond Drills
Triple Wacker Plate	Rail Mounted Sleeper Drills
Single Wacker Plate	Rail Mounted Impact Wrenches
Electric Ballast Tamper	Cat Scanner
Petrol Ballast Tamper	Rail Scooters
Huck Bolt Equipment	Ironmen ☺
Cold Expansion (new/existing holes)	Gifas Warning Systems
Cold Expansion Drill	Truetec Corner Gauge Grinder
Rail Drill ☺	Stressing Equipment
Sleeper Drill ☺	Rail End Straighteners
Rail Grinder	AP21 Pandrol Clip Machine
Thermic Weld Shears	Hydraulic Pandrol Remover
	Strimmer/Brushcutter
	Robel Rail Lifter
	Geismar EGO4 Motorised Trolley

ARTP
association of railway training providers

Torrent Trackside Training Division specialises in the training and certification of operatives in the safe and proficient use of specialist rail tools and equipment. All our training personnel have many years experience in rail industry training and safe working procedures. As a result we are a full member of the Association of Railway Training Providers (ARTP).

Each delegate attending one of our courses gains a thorough understanding of how to operate the designated equipment, safely and in a proficient manner through interactive 'classroom' sessions and practical demonstrations carried out by a skilled expert. On satisfactory completion of the session, attendees receive course notes and a personalised Certificate of Competence.

Courses are held at one of our many centres throughout the UK or specific training can be provided at a suitable location of your choice.



At a glance

- An experienced team specialising in the training needs of the rail industry
- Open courses or specific training to meet customer requirements
- Courses covering a wide range of rail equipment for operation and maintenance
- Personalised training certification
- Prompts when re-certification is due
- National coverage
- Centralised booking facility
- Members of the Association of Railway Training Providers (ARTP)
- ISO 9001:2000 registration
- Link-up qualified
- City & Guilds accredited training centre
- R.P.A. competence assessments for small plant
- A1 assessments and V1 verification



City & Guilds

index a-z

Access Equipment	16	Lift & Shift	17
Modular Stairway System	16	EGO4 Motorised Bogie	18, 32
Scaffold Towers, Alloy	16	Harsco Gator	18, 32
Applicators & Extractors	21	Iron Man	17
Atlas Copco Cobra TT Tamper/Breaker	20	Jacks	17
Cembre Clipper Power Unit	21, 32	Lifting Beams	18
Clip Removers	21	Rail Lifter	17
Geismar AP11	21	Rail Scooter	17
Geismar AP21	21	Rail Skates	18
Spike Removers	21	Trolleys	18
Ballast Tamping	19	Lighting	12
Atlas Copco Cobra TT Tamper/Breaker	20	Consumables; Lamps, Bulbs	12
Atlas Copco FB60	19	Floodlight Systems; Tower Lights	14
Hilti TE905 Ballast Tamping Tool	20	Inspection Lamps, Handlamps	12
Stoneblower	19	Linklites	12
Wacker Plates	19, 32	Portable	13
Chain Saws & Brush Cutters	25	Trackside & Tunnel	12
Hedge Trimmer	25	Mobile Cabins & Storage	30
Replacement Blades, Cords	25	Groundhog Mobile Units	30
Safety Equipment	25	Storage Units; Fire, Tool	30
Cold Expansion Equipment	26, 32	Mobile Communications	31
Cold Expansion Power Pack	26	Cellular Telephones	31
Consumables	26	Two-way Radio Handsets	31
Cutters	4	Operator Supplied Specialist Plant Hire	32
Cut Off Saws	4, 28	Power Packs	10, 21, 26
Rail, Disc	4, 28	Pumps	29
Drilling Machines	6	Stressing	10
Consumables	7	Power Packs	10
Rail	6, 7, 8	Rail Creep Adjusters	10
Sleeper	6	Rail End Straighteners	10
Fuel		Rollers; Side, Under	10
Cutting Oil	4	Traffic Management	33
Petrol	4, 21	Training Courses	34
2-Stroke Oil	4, 21	Warning & Safety Equipment	22
Generators	11	Audible Warning Device	22
Diesel	11	EROS Warning Board	22
Petrol	11	Marker Board	22
Grinding & Cutting Equipment	28	Possession Limit Board	22
Geismar MC2, MLC, MS9	28	Safety Barrier Systems	23
Hand-held Grinders	28	Speed Boards	22
Rail Profile Grinders	28	Track Magnet	22
Welder/Generators	28	Warning Systems, Gifas, Factair, ATWS	22, 24
Weld Shears, Trimmers	28	Welding & Brazing Equipment	27
Hand & Ballast Tools	15	Oxy-acetylene	27
Huck Bolt Installation Equipment	26	Oxy-propane	27
Huck Bolt Power Pack	26	Pin Brazing	27
		Welder/Generators	27
		Welding Oven	27
		Wrenches	5
		Consumables	5
		Impact	5
		Torque	5

MODELS AND CONDITIONS FOR THE HIRING OF PLANT 2001



1. **DEFINITIONS**
 - (a) The "Owner" is the Company, firm or person letting the plant on hire and includes their successors, assigns or personal representatives.
 - (b) The "Hirer" is the Company, firm, person, Corporation or public authority taking the Owner's plant on hire and includes their successors or personal representatives.
 - (c) "Plant" covers all classes of plant, machinery, equipment and accessories therefore, which the Owner agrees to hire to the Hirer.
 - (d) A "day" shall be 8 hours or if the day is a Friday it shall be 7 hours, unless otherwise specified in the Contract.
 - (e) A "working week" covers the period from starting time on Monday to finishing time on Friday.
 - (f) The "hire period" shall commence from the time when the plant leaves the Owner's depot or place where last employed and shall continue until the plant is received back at the Owner's named depot or other agreed location.
 - (g) A "Consumer Contract" is a contract entered into with a person acting in his own capacity and not for or on behalf of any business or trade entity.
 2. **EXTENT OF CONTRACT**

No conditions other than specifically set forth in the Offer and Acceptance and herein shall be deemed to be incorporated in or to form part of the Contract or shall otherwise govern the relationship between the Owner and the Hirer in relation to the hire of any particular plant pursuant to the Offer and Acceptance. The Contract does not create any right enforceable by or for the benefit of any person other than a party to it except that a person who is a party to it or to an assignee of the rights of the Owner is deemed to become a party to the Contract after the date of succession or assignment (as the case may be).
 3. **ACCEPTANCE OF PLANT**

Acceptance of the plant on site implies acceptance of all terms and conditions herein unless otherwise agreed in writing.
 4. **UNLOADING AND LOADING**

The Hirer shall be responsible for the unobstructed access and, unless otherwise agreed in writing, for unloading and loading of the plant at the site, and any personnel supplied by the Owner for such unloading and/or loading shall be deemed to be under the direction and control of the Hirer. Such personnel shall for all purposes in connection with their employment in the unloading and/or loading of the plant be regarded as the servants or agents of the Hirer (but without prejudice to any of the provisions of Clause 13) who alone shall be responsible for all claims arising in connection with unloading and/or loading of the plant by, or with the assistance of, such personnel.
 5. **DELIVERY IN GOOD ORDER AND MAINTENANCE. INSPECTION REPORTS**
 - (a) Unless notification of hiring is received by the Owner from the Hirer in the case of plant supplied with an operator within four working days, and in the case of plant supplied without an operator within three working days, of the plant being delivered to the site, the plant shall be deemed to be in good order, save for either an inherent fault or a fault not ascertainable by reasonable examination, in accordance with the terms of the Contract and to the Hirer's satisfaction, provided that where plant requires to be erected on site, the periods above stated shall be calculated from the date of completed erection of plant. The Hirer shall be responsible for its safekeeping, use in a workmanlike manner within the manufacturer's rated capacity and return on the completion of the hire in equal good order (fair wear and tear excepted).
 - (b) The Hirer shall ensure that the Owner's operator or driver take all reasonable steps to keep himself acquainted with the state and condition of the plant. If such plant be continued at work or in use in an unsafe and unsatisfactory state or environment, the Hirer shall be solely responsible for any damage, loss or accidents whether directly or indirectly arising therefrom.
 - (c) The current Inspection Report required under the relevant legislation, or a copy thereof, shall be supplied by the Owner if requested by the Hirer and returned on completion of hire.
 6. **SERVICING AND INSPECTION**

The Hirer shall at all reasonable times allow the Owner, his Agents or his Insurers to have access to the plant to inspect, test, adjust, repair or replace the same. So far as reasonably possible, such work will be carried out at times to suit the convenience of the Hirer.
 7. **TIMBER MATS OR EQUIVALENT**
 - (a) If the ground (including any private access road or track) is soft or unsuitable for the plant to work on, travel, or be transported over without timbers or equivalents the Hirer shall supply and lay suitable timbers or equivalents in a suitable position for the plant to travel over, work on, or be transported over, including for the purpose of delivery and collection.
 - (b) Where the hire is for lifting equipment, any sound timber or other material supplied by the Owner for use with outriggers/stabilisers is provided solely to assist the Hirer and expressly not relieve him of his legal, regulatory or contractual obligations to ensure adequate stability of the lifting equipment under the imposed loading.
 8. **HANDLING OF PLANT**

When a driver or operator or any person is supplied by the Owner with the plant, the Owner shall supply a person competent in operating the plant or for such purpose for which the person is supplied and such person shall be under the direction and control of the Hirer. Such drivers or operators or persons shall for all purposes in connection with their employment in the working of the plant be regarded as the servants or agents of the Hirer (but without prejudice to any of the provisions of Clause 13) who also shall be responsible for all claims arising in connection with the operation of the plant by the said drivers/operators/persons. The Hirer shall not allow any other person to operate such plant without the Owner's previous consent to be confirmed in writing.
 9. **BREAKDOWN, REPAIRS AND ADJUSTMENT**
 - (a) When the plant is hired without the Owner's driver or operator any breakdown or the unsatisfactory working of any part of the plant shall be notified immediately to the Owner. Any claim for breakdown time will only be considered from the time and date of notification.
 - (b) Full allowance for the hire charges and for the reasonable cost of repairs that have been authorised by the Owner will be made to the Hirer for any stoppage due to breakdown of plant caused by the development of either an inherent fault or a fault not ascertainable by reasonable examination or fair wear and tear and for all stoppages for normal running repairs in accordance with the terms of the Contract.
 - (c) The Hirer shall not, except for the changing of any tyre and repair of punctures, repair the plant without the written authority of the Owner. The changing of any tyre and repair of punctures are however the responsibility of the Hirer who should arrange for them to be changed/repaired without awaiting authorisation from the Owner. The Hirer is responsible for all costs incurred in the changing or replacement of any tyre and the repair of any puncture.
 - (d) The Hirer shall be responsible for all expense involved arising from any breakdown and all loss or damage incurred by the Owner due to the Hirer's negligence, misdirection or misuse of the plant, whether by the Hirer or his servants, and for the payment of hire at the idle time rate as defined in Clause 25 during the period the plant is necessarily idle due to such breakdown loss or damage. The Hirer is responsible for the cost of spares and/or repairs due to theft, loss or vandalism of the plant. The Owner will be responsible for the cost of repairs, inclusive of the cost of spares, to the plant involved in breakdown from all other causes.
 10. **OTHER STOPPAGES**

No claims will be admitted (other than those allowed for under "Breakdown" or for "Idle Time", as herein provided), for stoppages through causes beyond the Hirer's control including bad weather or ground conditions nor shall the Owner be responsible for the cost or expense of recovering any plant from soft ground.
 11. **LOSS OF OTHER PLANT DUE TO BREAKDOWN**

Each item of plant hired under the Contract is to be treated as a separate unit and the breakdown or stoppage of one or more units or vehicles (whether the property of the Owner or otherwise) through any cause whatsoever, shall not entitle the Hirer to compensation or allowance for the loss of working time by any other unit or units of plant working in conjunction therewith, provided that where two or more items of plant are expressly hired together as a unit, such items shall be deemed a unit for the purpose of breakdown.
 12. **LIMITATION OF LIABILITY**

Except for liability on the part of the Owner which is expressly provided for in the Contract (including these Clauses):-

 - (a) The Owner shall have no liability or responsibility for any loss or damage of whatever nature due to or arising through any cause beyond his reasonable control.
 - (b) The Owner shall have no liability or responsibility, whether by way of indemnity or by reason of any breach of the Contract, breach of statutory duty or misrepresentation or by reason of the commission of any tort (including but not limited to negligence) or by reason of the loss of or damage to any of the Hirer's property, loss of or damage to any other asset or facility, loss of production or productivity, loss of contracts with any third party, liabilities of whatever nature to any third party, and/or any other financial or economic loss or indirect or consequential loss or damage of whatever nature; and
 - (c) whenever the above Clauses (including these Clauses) provides that any allowance is to be made against hire charges, such allowance shall be the Hirer's sole and exclusive remedy in respect of the circumstances giving rise to the allowance, and such remedy shall be limited to the amount of hire charges which would otherwise be or become due if the allowance in question had not been made.
 13. **HIRER'S RESPONSIBILITY FOR LOSS AND DAMAGE**
 - (a) For the avoidance of doubt it is hereby declared and agreed that nothing in this Clause affects the operation of Clauses 4, 5, 8 and 9 of this Agreement.
 - (b) During the hire period the Hirer shall be responsible for damage, loss or injury due to or arising:
 - (i) make good to the Owner all loss of or damage to the plant from whatever cause the same may arise, fair wear and tear excepted, and except as provided in Clause 9 herein, and shall also fully and completely indemnify the Owner in respect of all claims by any person whatsoever for injury to person or property caused by or in connection with or arising out of the storage, transit, transport, unloading, loading or use of the plant during the continuance of the hire period, and in respect of all costs and charges in connection therewith whether arising under statute or common law. In the event of loss of or damage to the plant, hire charges shall be continued at idle time rates as defined in Clause 25 until settlement has been effected.
 - (ii) Notwithstanding the above the Hirer shall be responsible for damage, loss or injury due to or arising:
 - (i) prior to delivery of any plant to the site (or where the site is not immediately adjacent to a highway maintainable at the public expense, prior to its leaving such highway) where the plant is in transit by transport of the Owner or as otherwise arranged by the Owner.
 - (ii) during the erection and/or dismantling of any plant where such plant requires to be completely erected/dismantled on site, always provided that such erection/dismantling is under the exclusive control of the Owner or his Agent,
 - (iii) after the plant has been removed from the site and is in transit on a highway maintainable at the public expense (or where the site is not immediately adjacent to a highway maintainable at the public expense after it has joined such highway) to the Owner by transport of the Owner or as otherwise arranged by the Owner,
 - (iv) where plant is travelling to or from a site on a highway maintainable at the public expense (or, where the site is not immediately adjacent to a highway maintainable at the public expense, prior to its leaving or after its joining such highway) under its own power with a driver supplied by the Owner.
 14. **NOTICE OF ACCIDENTS**

If the plant is involved in any accident resulting in injury to persons or damage to property, immediate notice must be given to the Owner by telephone and confirmed in writing to the Owner's office. In relation to any claim in respect of which the Hirer is not bound fully to indemnify the Owner, no admission, offer, promise of payment or indemnity shall be made by the Hirer without the Owner's consent in writing.
 15. **RE-HIRING ETC**

The plant or any part thereof shall not be re-hired, sub-let, or lent to any third party without the written permission of the Owner.
 16. **CHANGE OF SITE**

The plant shall not be moved from the site to which it was delivered or consigned without the written permission of the Owner.
 17. **RETURN OF PLANT FOR REPAIRS**

If during the hire period the Owner decides that urgent repairs to the plant are necessary he may arrange for such repairs to be carried out on site or at any location of his nomination. In that event the Owner shall be obliged to replace the plant with similar plant to that of the Owner (but not subject to any of the provisions of Clause 9 and/or 13) paying the transport charges involved. In the event of the Owner being unable to replace the plant he shall be entitled to determine the Contract forthwith (but without prejudice to any of the provisions of Clauses 9 and/or 13) by giving written notice to the Hirer. If such determination occurs:
 - (a) within three months from the commencement of hire, the Owner (but without prejudice to any of the provisions of Clauses 9 and/or 13) shall pay all transport charges involved, or
 - (b) more than three months from the commencement of hire, the Owner (but without prejudice to any of the provisions of Clauses 9 and/or 13) shall be liable only for the cost of reloading and return transport.
18. **BASIS OF CHARGING**
 - (a) The Hirer shall tender to the Owner for each week an accurate statement of the number of hours the plant has worked each day. Where the plant is accompanied by the Owner's driver or operator, the Hirer shall sign the employee's Time Record Sheets. The signature of the Hirer's representative shall bind the Hirer to accept the hours shown on the Time Record Sheets.
 - (b) Full allowance will be made for breakdown periods resulting from mechanical or electrical faults or absence of driver or operator supplied by the Owner except where breakdown is due to acts or omissions of third parties and/or the Hirer's misuse, misdirection or negligence, subject however to the provisions of Clause 8 of this Agreement.
 - (c) Breakdown time in respect of such periods shall be allowed for not more than 8 hours Monday to Thursday and not more than 7 hours on Friday less the actual hours worked.
 - (d) Plant shall be hired out either:
 - (i) for a stated minimum number of hours per day or per week or
 - (ii) without any qualification as to minimum hours. Odd days at the beginning and at the end of the hire period shall be charged pro rata.
 - (e) Stoppages due to changing of tyres and repairs to punctures will be chargeable as working time up to a maximum of 2 hours for any one stoppage and any excess will be charged for at the appropriate idle time rates.
 - (f) In the case of plant which requires to be dismantled for the purpose of transportation, if the Owner agrees to a modification of the hire charge for the period required for assembling on site and dismantling upon completion of hire, such modification of the hire charge and the period for which it shall apply shall be stated on the Hire Contract.
19. **PLANT HIRED ON A DAILY BASIS WITHOUT QUALIFICATION AS TO HOURS**

The full daily rate will be charged on a daily basis irrespective of the hours worked except in the case of breakdown for which the Owner is responsible, when the actual hours worked will be charged pro rata of the average working day. No hire charge shall be made for Saturday and/or Sunday unless the plant is actually worked.
20. **PLANT HIRED BY THE WEEK OR MONTH WITHOUT QUALIFICATION AS TO HOURS**

The weekly or monthly rate shall be charged irrespective of the number of hours worked, except in the case of breakdown for which the Owner is responsible when an allowance pro rata of the agreed weekly rate or pro rata of the agreed monthly rate will be made for each full working day broken down calculated to the nearest half working day.
21. **PLANT HIRED BY THE WEEK OR THE HOUR FOR A MINIMUM OF 39 HOURS PER WEEK**

If no breakdown occurs during the minimum period of the Contract, full hire charge will be charged and an addition pro rata charge will be made for hours worked in excess of such minimum period. Allowance will be made for breakdowns up to 8 hours except on Fridays when the allowance will be up to 7 hours providing always that where the actual hours worked are in excess of the minimum period less breakdown time, the actual hours worked shall be chargeable. Idle time for this purpose shall be treated as actual working time. The minimum week of 39 hours shall be reduced by 8 hours Monday to Thursday and 7 hours Friday for each day's statutory holiday occurring in such week, provided that the plant does not work on the holiday.
22. **"ALL-IN" RATES**

Where "All-In" rates are charged by agreement the minimum period shall be as defined in the Contract and in accordance with the hire rates and terms contained therein, subject to the provisions of Clause 26.
23. **COMMENCEMENT AND TERMINATION OF HIRE (TRANSPORT OF PLANT)**
 - (a) The hire period shall commence from the time when the plant leaves the Owner's depot or place where last employed and shall continue until the plant is received back at the Owner's named depot or other agreed location but an allowance shall be made of not more than one day's hire charge each way for travelling time. If the plant be used on day of travelling, full hire rates shall be paid for the period of use on that day. If more than one day be properly and unavoidably occupied in transporting the plant, a hire charge at idle time rates shall be payable for such extra time, provided that where plant is hired for a total period of less than one week, the full hire rate shall be paid from the date of despatch to the site of return to the Owner's named depot or other agreed location.
 - (b) An allowance of not more than one day's travelling time shall be allowed when the plant is travelling to a site other than that specified in the Contract provided that:
 - (i) consent to such transfer has been given by the Owner under Clause 16, and,
 - (ii) the plant is moved by means other than under its own power, and,
 - (iii) the plant shall have been on the site specified in the Contract or on any other site to which consent to transfer has been given under Clause 16 for a period of at least 14 days.
24. **NOTICE OF TERMINATION OF CONTRACT**

Where the period of hire is indeterminate or having been defined becomes indeterminate the Contract shall be determinable by seven days' notice in writing given by either party to the other except in cases where the plant has been lost or damaged. Notwithstanding that the Owner may have agreed to accept less than 7 days' notice of termination, the Hirer's obligations under Clause 13 shall continue until the plant is returned to the Owner in accordance with Clause 31 or until the Owner has collected the plant within 7 days following the acceptance of short notice. Oral notice given by the Hirer to the Owner's driver or operator shall not be deemed to constitute compliance with the provisions of this Clause.
25. **IDLE TIME**

When plant is prevented by prolonged inclement weather from working for a complete week, the charge shall be two thirds of the hire rate or such other idle time as is stated in the Offer. If the plant works for any time during the guaranteed hire period, then the whole of that guaranteed minimum period shall be charged as working time. In any case no period less than one day shall be charged as idle time. Where an "All-In" rate is charged, idle time is charged on the machine element only. Full rate will be charged for the operator.
26. **WAGES AND OTHER CHARGEABLE ITEMS RELATING TO DRIVERS AND OPERATORS OF PLANT**

All chargeable items shall be paid by the Hirer at the rates contracted save that any subsequent increases before and/or during the hire period arising from awards under any wage agreements and/or from increases in the employer's statutory contribution shall be charged as additions at cost by the Owner and shall be admitted and paid by the Hirer.
27. **TRAVELLING TIME AND FARES**

Travelling time and fares for drivers, operators and any person supplied by the Owner, similar expenses incurred at the beginning and end of the hire period and where appropriate return fare of the driver, operator and any person supplied by the Owner to his home will be chargeable at cost. The hire charge shall be made by the Owner for any such expenses incurred by the Owner for the purpose of servicing, repair or maintenance of plant, unless necessitated by the Hirer's negligence, misdirection or misuse of the plant.
28. **FUEL, OIL AND GREASE**

Fuel, oil and grease shall, when supplied by the Owner, be charged at net cost or an agreed estimate of net cost, and when supplied by the Hirer shall be of a grade or type specified by the Owner.
29. **SHARPENING OF DRILLS/STEELS, ETC.**

The cost of re-sharpening shall be borne by the Hirer.
30. **OWNER'S NAME PLATES**

The Hirer shall not remove, deface or cover up the Owner's name plate or mark on the plant indicating that it is his property.
31. **TRANSPORT**

The Hirer shall pay the cost of and if required by the Owner, arrange transport of, the plant from the Owner's depot or other agreed location to the site and return to named depot or other agreed location on completion of the hire period.
32. **GOVERNMENT REGULATIONS**

The Hirer shall be responsible for compliance with relevant regulations issued by the Government or Local Authorities, including Regulations under the Factories Acts, Health and Safety at Work Act etc. and observance of Road Traffic Acts should they apply, including the cost of Road Fund Licences and any insurances made necessary thereby, save that if and during such time as the plant is travelling, whether for full or part journey from Owner to site and site to Owner under its own power with a driver supplied by the Owner, the Owner and not the Hirer shall be responsible as aforesaid.
33. **PROTECTION OF OWNER'S RIGHTS**
 - (a) The Hirer shall not re-hire, sell, mortgage, charge, pledge, part with possession of or otherwise deal with the plant except at that purpose enter into or upon any premises where the same may be and the determination of the hiring under this Condition shall not affect the right of the Owner to recover from the Hirer any monies due to the Owner under the Contract or any of the Owner's rights and remedies. In particular, without limitation, the Owner shall be entitled to claim the hire charges outstanding as at the date of determination of the hire under this Clause, together with transport charges under Clause 31, and damages for the Hirer's actual or deemed breach of the Contract under this Clause.
 - (b) If the Hirer make default in punctual payment of all sums due to the Owner for hire of plant or other charges or shall fail to observe and perform the terms and conditions of this Contract, or if the Hirer shall suffer any distress or execution to be levied against him or make or propose to make any arrangement with his creditors or becomes insolvent within the meaning of Section 113 of the Housing Grants, Construction and Regeneration Act 1996 or any amendment or re-enactment thereof for the time being in force, or shall do or cause to be done or permit or suffer any act or thing whereby the Owner's rights in the plant may be prejudiced or put into jeopardy, this Contract may forthwith be determined by notice from the Owner to the Hirer (notwithstanding that the Owner may have waived some previous default or matter of the same or a like nature). The Contract shall thereupon be deemed determined by reason of the Hirer's breach and it shall be lawful for the Owner to retake possession of the said plant and to enforce the same against the Hirer, and the Hirer shall be liable to the Owner for the full amount of the hire under this Condition shall not affect the right of the Owner to recover from the Hirer any monies due to the Owner under the Contract or any of the Owner's rights and remedies. In particular, without limitation, the Owner shall be entitled to claim the hire charges outstanding as at the date of determination of the hire under this Clause, together with transport charges under Clause 31, and damages for the Hirer's actual or deemed breach of the Contract under this Clause.
34. **CHANGES IN NORMAL WORKING WEEK**

The Hirer shall be deemed to have been framed upon the basis of the Hirer working a 5-day week of 39 hours; it is hereby agreed that in the event of:

 - (a) there being any change in the normal weekly hours in the industry in which the Hirer is engaged or,
 - (b) the Contract being made with reference to a 5-day week of other than 39 hours.
 Clauses 16(a), 16(c) and (d), 20 and (in regard to breakdown allowance and reduction for statutory holidays) 21 shall be deemed to be modified conformably and in the event of an alteration in the normal weekly working hours in the said industry the "Hire Rates and Terms" of plant hired for a minimum weekly or daily period shall be varied pro rata.
35. **DISPUTE RESOLUTION**
 - (a) If the original site is in England or Wales, the proper law of the Contract shall be English law. If the original site is in Scotland, the Contract shall in all respects by construed and operated as a Scottish Contract, and shall be interpreted in accordance with Scots law. If the original site is in Northern Ireland, the proper law of the Contract shall be Northern Ireland law.
 - (b) The Scheme for Construction Contracts contained in the Scheme for Construction Contracts (England and Wales) Regulations 1998, or any amendment or re-enactment thereof for the time being in force, shall apply to the Contract. The person (if any) specified in the Contract to act as adjudicator may be named in the Offer. The specified Association body's selected adjudicators shall be the Construction Plant Hire Association acting by its President or Chief Executive for the time being, in paragraph 21 of the Scheme "this paragraph" shall be deleted and "paragraph 20" substituted.
 - (c) The Owner and the Hirer shall comply forthwith with any decision of the adjudicator and shall submit to summary judgment and enforcement (and/or, under Scots law, shall consent to a motion for summary decree and submit to enforcement) in respect of all such decisions; in each case, without any defence, set-off, counterclaim, abatement or deduction. Where, under Scots law, the Owner, the Hirer, or the adjudicator, wishes to register a decision of the adjudicator for execution in the Books of Council and Session, any other party shall, on being requested to do so, forthwith consent to such registration by subscribing the decision before a witness.

SUPPLEMENTARY CONDITIONS APPLICABLE TO RAIL PLANT HIRE
TO BE READ IN CONJUNCTION WITH THE CPA MODEL CONDITIONS FOR THE HIRING OF PLANT 2001

1. DEFINITIONS AND PRIMACY

1.1 These Supplementary Conditions are applicable to the hiring of rail plant and shall be referred to as the "Supplementary Rail Conditions". The CPA Model Conditions for the Hiring of Plant 2001 shall be referred to as the "CPA Conditions".

1.2 Unless the context suggests otherwise words and terms in the Supplementary Rail Conditions shall have the same meaning as in the CPA Conditions.

1.3 Any reference in these Supplementary Rail Conditions to a statute, statutory instrument, guidance document, standard or protocol shall be a reference to whatever statute, statutory instrument, guidance document, standard or protocol is currently in force in respect of the relevant issued or is regarded as constituting the accepted industry guidance.

2. WORKING HOURS AND CHARGES

Notwithstanding Clause 1 of the CPA Conditions and without prejudice to the terms of Clause 19 of the CPA Conditions the definition of working hours shall be as follows:

2.1 "Weekday" working hours shall mean any shift between Monday to Friday commencing at 7 a.m., the first 8 hours of which shall be chargeable at "weekday" rates and all hours in excess of 8 hours shall be chargeable at "weeknight" rates.

2.2 "Weeknight" working hours shall mean any shift from Monday to Thursday commencing at 4 p.m. and shall be chargeable at "Weeknight" rates. "Weeknight" working hours shall also include any other hours worked in excess of the 8 hour "weekday" shift described in 2.1 above and shall be chargeable at "weeknight" rates.

2.3 "Weekend" working hours shall mean any shift between 4 p.m. on a Friday and 7 a.m. on a Monday and shall be chargeable at "Weekend" rates. "Weekend" working hours shall also include any hours not specifically defined within "Weekday" or "Weeknight" working hours, e.g. Bank Holidays.

3. DELIVERY, MAINTENANCE AND INSPECTION REPORTS

Without prejudice to the terms of Clause 5 and 28 of the CPA Conditions the Owner shall be responsible for ensuring that:

3.1 At the time of delivery to the Hirer, the plant supplied is in good working order so that the plant can be used safely and without risk to health.

3.2 The full particulars of the last and next service dates for the plant together with the type and schedule of maintenance is either provided to the Hirer or made available for inspection at the commencement of the hire period.

3.3 The Hirer is informed of the type and schedule of maintenance for the plant required to be carried out during the hire period.

3.4 Operations and safety checks have been carried out on the plant supplied before delivery, in order to ensure that the plant is in safe working order and that all statutory requirements have been complied with, including, without limitation, any requirements under the Health and Safety at Work etc. Act 1974 and any regulations issued thereunder.

3.5 All Statutory certificates and inspection reports relating to the plant are either provided to the Hirer or made available for inspection at the commencement of the hire period.

3.6 The plant supplied is maintained, tested and examined within the hire period in accordance with the maintenance schedule.

3.7 Where the plant supplied is fitted with radiators, that adequate anti-freeze mixture is contained in the radiators to protect them from damage due to low temperatures.

3.8 Where applicable the plant supplied has a Railway Group Standard GM/RT1300 Engineering Acceptance of Road/Rail Plant and/or GM/RT2400 design of On-Track Machines compliance certificate. Copies of these certificates shall either be provided to the Hirer or made available for inspection at the commencement of the hire period.

3.9 The plant is supplied with adequate fuel oil, engine sump oil and hydraulic oil and that tyres are maintained in a condition that is fit for purpose and to the specified pressures.

4. HANDLING OF PLANT

Without prejudice to the terms of Clause 8 of the CPA Conditions the Owner shall be responsible for ensuring that where supplied by the owner:

4.1 The operator or driver of the plant is fully competent to RPA Standard and deemed so by a qualified assessor and medically fit to standard GO/RT/3353 Personal Track Safety. The operator or driver must have PTS including AC/DC electrified lines unless the contract specifically states PTS is not required.

4.2 The operator or driver is authorised by the Owner to operate the type of plant for the purposes for which the plant is to be used and holds a proficiency certificate for the particular type of plant being hired. The operator or driver must carry the appropriate proficiency certificate whilst operating plant.

4.3 The operator or driver complies with GH/RT/4004 Changes in Working Hours - (Safety Critical Work) and that all records relating to the operator's or driver's working hours are kept and made available for inspection at the request of the Hirer.

4.4 A Drugs and Alcohol policy compatible with the Railway Group Standard GH/RT4000 - Drugs and Alcohol, is maintained and that records of testing and screening is kept for a minimum 3 years and is available for inspection by the Hirer.

4.5 A fully qualified and competent emergency fitter who holds a current PTS certificate is available to attend the site at any reasonable time.

4.6 At the commencement of the hire period, an "emergency arrangements" information sheet is supplied to the Hirer which lists, for example, but without limitation, the location of stop controls and fire extinguishers together with emergency contact telephone numbers.

4.7 Any operator, driver or emergency fitter supplied by the Owner shall be provided with suitable protective equipment for use on site.

4.8 Any operator, driver or emergency fitter supplied by the Owner shall have agreed to be screened for the use of alcohol and drugs in accordance with GH/RT/4000 for the Application of "for cause" alcohol and drugs screening when so requested by the Hirer.

5. Without prejudice to the terms of Clause 8 of the CPA Conditions any operator or driver supplied by the Owner shall be under the control and supervision of the Hirer from the commencement of the hire period. The operator or driver shall be informed of the name of the Hirer's authorised representative who shall brief the operator or driver as to the tasks the operator or driver is to undertake to ensure that he fully understands any hazards to his or others health, safety and welfare on site. The Hirer shall not allow any other person to operate such plant without the Owner's prior written consent.

6. CANCELLATION CHARGES

6.1 When any hire period cancelled includes weekday and weeknight rates then:

6.1.1 Provided the Hirer informs the Owner of their intention to cancel at least 24 hours before the commencement of the hire period the Hirer shall incur no charges.

6.1.2 If the Hirer informs the Owner of their intention to cancel less than 24 hours before the commencement of the hire period, the Hirer shall incur the full transportation charges where the plant has left the Owner's premises together with standing time to include costs of all attachments and accessories. A reasonable reduction to these charges shall be made if the Owner is able to re-book the plant within the cancellation period.

6.2 When the hire period cancelled includes weekend rates then:

6.2.1 Providing the Hirer informs the Owner of their intention to cancel prior to 5 p.m. on the Thursday prior to the hire period commencing the Hirer shall incur no charge.

6.2.2 If the Hirer informs the Owner of their intention to cancel between Thursday 5 p.m. and Friday 12 noon the Hirer shall incur full transportation charges where the plant has left the Owner's premises together with standing time to include costs of all attachments and accessories. A reasonable reduction to these charges shall be made if the Owner is able to re-book the plant within the cancellation period.

6.2.3 If the Hirer informs the Owner of their intention to cancel after Friday 12 noon, the Hirer shall incur full charges. A reasonable reduction to these charges shall be made if the Owner is able to re-book the plant within the cancellation period.

6.3 If the work cannot be carried out due to any default of the Owner then the Hirer shall incur no charge for the specific item of plant the subject of such default.

7. DELIVERY AND COLLECTION OF PLANT

7.1 The Owner and the Hirer shall determine a designated time and place for the delivery of the plant prior to the commencement of the hire period.

7.2 The Owner shall ensure that no plant shall encroach upon any railway line unless the Hirer so authorises.

7.3 The Owner and Hirer shall determine a designated time and place for collection of the plant on completion of the hire period.

8. INDEMNITIES

8.1 On delivery of the plant to the designated place determined by the Owner and Hirer, throughout the hire period and the period prior to collection, the Hirer shall indemnify the owner and hold the Owner harmless against any loss, damage, liability, cost (including legal cost) and expense incurred by the Owner, caused or contributed to by the Hirer's breach of these Supplementary Rail Conditions or the CPA Model Conditions for the Hiring of Plant 2001.

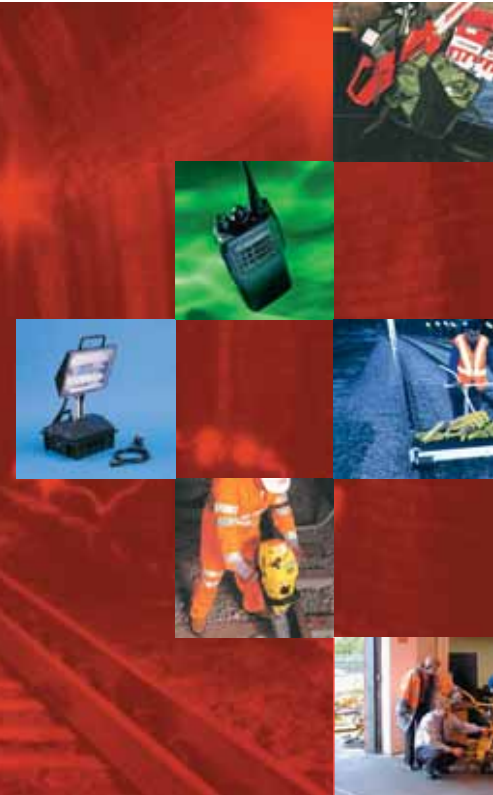
8.2 The Owner shall indemnify the Hirer and hold the Hirer harmless against any loss, damage, liability, cost (including legal cost) and expense incurred by the Hirer as a result of the Owner's breach of clause 9.1 below.

9. INSPECTION OF PLANT

9.1 Without prejudice to the terms of Clause 6 of the CPA Conditions no person other than an employee of the Owner, his nominated repair agents, his insurer's representatives or representative of the Safety Case holder shall enter upon the site for the purposes of inspecting or maintaining plant and then only with the prior consent of the Hirer (which consent shall not unreasonably be withheld).



Torrent Trackside



UK Rail Centres

24hr Hotline: 0845 7697168

Glasgow

Coatbridge Road, Bargeddie, Glasgow G69 7TR
t: 0141 771 3333. f: 0141 771 3311

Bolton

Raikes Lane Industrial Estate, Manchester Road, Bolton BL3 2NH
t: 01204 371144. f: 01204 371155

Rotherham

45/47 Masbrough Street, Rotherham, South Yorkshire S60 1HT
t: 01709 558111. f: 01709 553706

Lichfield

Network House, Europa Way, Britannia Enterprise Park, Lichfield, Staffs WS14 9TZ
t: 01543 421900. f: 01543 421930

Bristol

Unit 13, St Andrews Trading Estate, Third Way, Avonmouth, Bristol BS11 9YE
t: 0117 982 6622. f: 0117 982 6699

Harlow

Shield House, Elizabeth Way, Harlow, Essex CM19 5AH
t: 01279 423147. f: 01279 423170

Maidstone

Old Mill Lane, Aylesford, Maidstone, Kent ME20 7DJ
t: 01622 710500. f: 01622 710514

Traffic Management

45/47 Masbrough Street, Rotherham, South Yorkshire S60 1HT
t: 01709 559111. f: 01709 553706

External Services

Network House, Europa Way, Britannia Enterprise Park, Lichfield, Staffs WS14 9TZ
t: 0845 6060880. f: 01543 421930. e: external.services@torrent.co.uk

Training Division

Network House, Europa Way, Britannia Enterprise Park, Lichfield, Staffs WS14 9TZ
t: 0845 6060880. f: 01543 421930. e: training@torrent.co.uk

Torrent Trackside Limited

Head Office:

Network House
Europa Way
Britannia Enterprise Park
Lichfield
Staffs WS14 9TZ

t: 01543 421900
f: 01543 421930
e: mail@torrent.co.uk
www.torrent.co.uk

